

Edi Touch Series Water Purification System

Edi Touch series, integrating 5.0 inch touch screen system, 3 way water quality sensor, 2 way flow sensor for quantified dispensing, single stage RO system, 2 pumps (S-series, and Q-series just 1 pump) and Ionpureo EDI module, with tap water inlet, the largest capacity is 240 liters per day.

It can produce single stage RO water, deionized water and ultrapure water. The single stage RO water's Ion rejection rate is more than 97%. The deionized water is stable grade II pure water with resistivity >5MQ.cm(25 °C), TOC < 30ppb, and the lowest running cost. And the ultrapure water's resistivity absolutely reaches to 18.2MO.cm.

It completely meets the highest grade I standard of ASTM, CAP, CLSI, EP and USP.



1. Colorful touch screen

- 5.0 inch colorful high-resolution touch screen (16:9) controlling system, achieve finger-touch new experience.

2. Comprehensive monitoring system

- 3 way online water quality sensor, detect the quality of feed water, RO water, deionized water, or ultrapure water respectively. And warn once water quality's standard exceeding.

3. Integrate with Ionpure@ EDI module

- Without softener, chemical regeneration and replacing any DI cartridge, its pure water's resistivity will be above 5MG .cm(25C), and TOC is lower than 30ppb. It will reduce the running cost and emissions of waste water.

4. Easy-to-replacing cartridge

- Independent pretreatment design, and integrated subsequent purification unit design, with fast inserted adapters, easy to replace.

5. Single stage RO and 2 pumps system

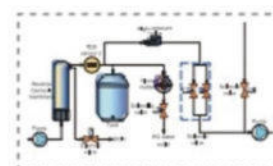
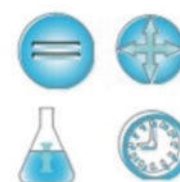
- 1st pump, to achieve single stage RO system, easy to maintain.
- 2nd pump, to achieve system sanitizing and circulation.

6. Whole plastic shell with high-strength

- Excellent ergonomic design, avoid rusting and keep clean, to meet GLP standard.

7. USB interface and SD card

- Auto running data storing function with built-in SD card, and data can be exported through the USB interface.

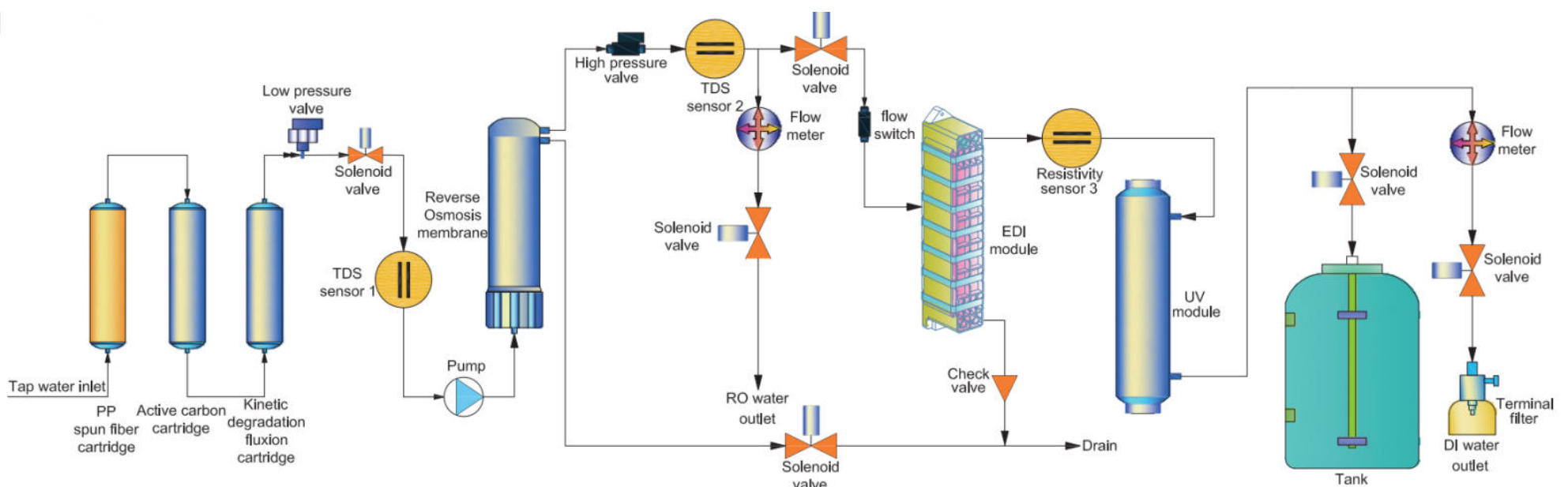


Features and Advantages

- Integrating with Ionpure" EDI technology and module.
- The largest capacity is 240 liters pure water per day.
- System sanitizing procedure, achieve the disinfection of ultrapure water's tube and valve.
- System circulation function, achieve ultrapure water's circulation to keep top quality of ultrapure water.
- All Cartridges replacing alarm function, based on time, or water quality, show cartridges' used and residual life.
- Multiple alarm function: no feed water, full water, water quality's standard exceeding, and cartridge life ending.
- Auto self-flushing of RO membrane function (interval and continuous time setting), extend RO membrane's life.
- Comprehensive Information query and management function, master system status, water quality, cartridges usage and alarm information.
- System time setting (year/month/day/hour/minute), timing standby (0-60 minute), and timing shutdown (0-24 hour) function.
- Level II password, protect all the parameters setting, and prohibit any unauthorized setting change.
- 2 kind of pure water tank (liquid level PE tank and pressure tank). Also external tanks is optional.
- 3 door and easy-to-replacing cartridge design, convenient to maintain system and replace cartridges.
- Tube and adapter with NSF authorization and top quality, reduce TOC level and assure ultrapure water's quality.
- Optimized pretreatment (including PP fiber, KDF and active carbon cartridge), effectively protect RO membrane.
- RO module with DOW's membrane, ensure long life, stable operation and high desalinization rate.
- 4 in 1 ultrapure cartridge (can be divided to 4 independent cartridge) with DOW's top polishing resin, ensure ultrapure water's quality up to 18.2 MS.cm, with the lowest TOC level.
- Double wavelength(185&254nm) ultraviolet lamp module, restrain bacteria's increase and reduce TOC.
- MWCO 5000D ultrafiltration module, effectively eliminate endotoxin, and suitable for precise cell cultivating and IVF.
- (0.45+0.1)um double layer PES terminal disinfection filter, assure that terminal pure water is absolutely axenic.

Edi Touch-Q series Deionized water system (Tap water inlet)

With 5.0 inch touch screen system, 3 way water quality sensor, 2 way flow sensor for quantified dispensing, single stage RO system, 1 pump and Ionpureo EDI module, Edi Touch-Q series deionized water system is superior choice of deionized water for general grade experiments. With tap water inlet, the largest capacity is 240 liters per day. It can produce single stage RO water and deionized water. The single stage RO water's ion rejection rate is more than 97%, and deionized water is stable grade II pure water with resistivity >5MΩ.cm(25°C), TOC < 30ppb, and the lowest running cost. It completely meets the requirements of general chemical or biological experiments for pure water, and is up to the standard of IS03696(Type II), ASTM D1193 (Resistivity of type II and TOC), and the requirements for pure water of CLSI (NCCLS) clinical laboratory, GB/T6682, America, Europe, Japan's pharma-copeia.



Flow Schematic

Specifications

Model	Edi Touch-Q10	Edi Touch-QIOUT
Output(25°C)*	10 liters/hour	
Pure water outlet	2: reverse osmosis water, deionized water	
Edi water quality		
Resistivity(25°C)	>5MΩ.cm	
TOC*	<30ppb	
Silicone rejection rate	>99.9%	
Bacteria	N/A	<0.1cfu/ml
Partide(>0.1pm)	N/A	<1/ml
Ro water quality		
Ion rejection rate	97%-99%(new RO membrane)	
Organic rejection rate	>99%,when MW>200 Dalton	
Partides and bacteria rejection rate	>99%	
Feed water requirements	Tap water, temperature:5-45°C,pressure:1.0-4.0Kgf/cm²	
Dimension and weight	LengthxWidthxHeight:500x360x540mm /Weight: about 20Kg	
Electrical requirements	AC100-240V,50/60Hz	
Power	120W	
Standard configuration	Main body (Including 1 set of cartridge)+20 liters PE tank	

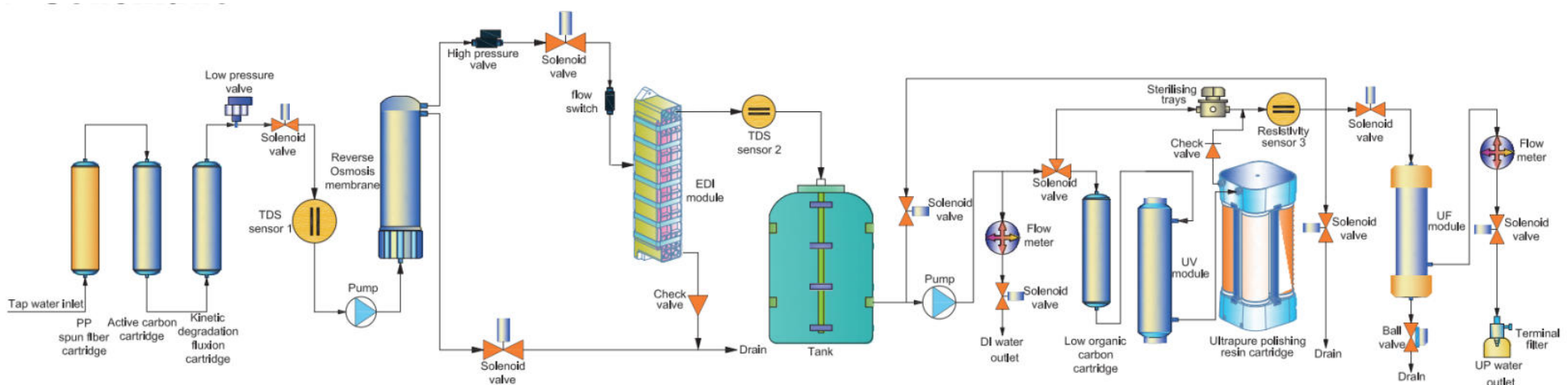
Remarks: *The value will be influenced by temperature and feed water's quality.

Edi Touch-S series Ultrapure water system (Tap water inlet)

With 5.0 inch touch screen system, 3 way water quality sensor, 2 way flow sensor for quanti-fied dispensing, single stage RO system, 2 pump and lonpure EDI module, Edi Touch-S ultra-pure water system is superior choice of ultrapure water for high grade experiments.

With tap water inlet, the largest capacity is 240 liters per day. It can produce deionized water and ultrapure water

The deionized water is stable grade II pure water with resistivity>5MΩ.cm(25°C), TOC<30ppb,and the lowest running cost It completely meets the requirements of general chemical or biological experiments for pure water,and is up to the standard of ISO 3696(Type II),ASTM D1193 (Resistivity of type II and TOC), and the requirements for pure water of CLSI (NCCLS) clinical laboratory, GB/T6682,America, Europe, Japan' s pharmacopeia. And the ultrapure water's resistivity absolutely reaches to 18.2MG.cm. It completely meets



Flow Schematic

Specifications

Model	Standard Edi Touch-S10	Eliminating endotoxin Edi Touch-SIOUF	Low TOC Edi Touch-SIOUY	Synthesizing Edi Touch-SIOUVF
Output(25°C)	10 liters/hour			
Pure water outlet	2:deionized water,ultrapure water			
Utrapure water quality				
Resistivity(25°C)	18.2MQ.cm			
TOC*	<10ppb	<10ppb	<3ppb	<3ppb
Bacteria	<0.1cfu/ml			
Partide(>0.1yum)	<1/ml			
Endotoxin	N/A	<0.001Eu/ml	N/A	<0.001Eu/ml
RNases	N/A	<1pg/ml	N/A	<1pg/ml
DNases	N/A	<5pg/ml	N/A	<5pg/ml
Deionized water quality				
Resistivity	>5MQ.cm			
TOC*	<30ppb			
Silicone rejection rate	>99.9%			
Feed water requirements	Tap water, temperature:5-45°C,pressure:1.0-4.0Kgf/cm			
Dimension and weight	LengthxWidthxHeight:500x360x540mm/Weight: about 20Kg			
Electrical requirement	AC100-240Y,50/60Hz			
Power	120W			
Standard configuration	Main body (Includng 1 set of cartridge)+20 liters PE tank			

Remarks: *The value will be influenced by temperature and feed water's quality.

