

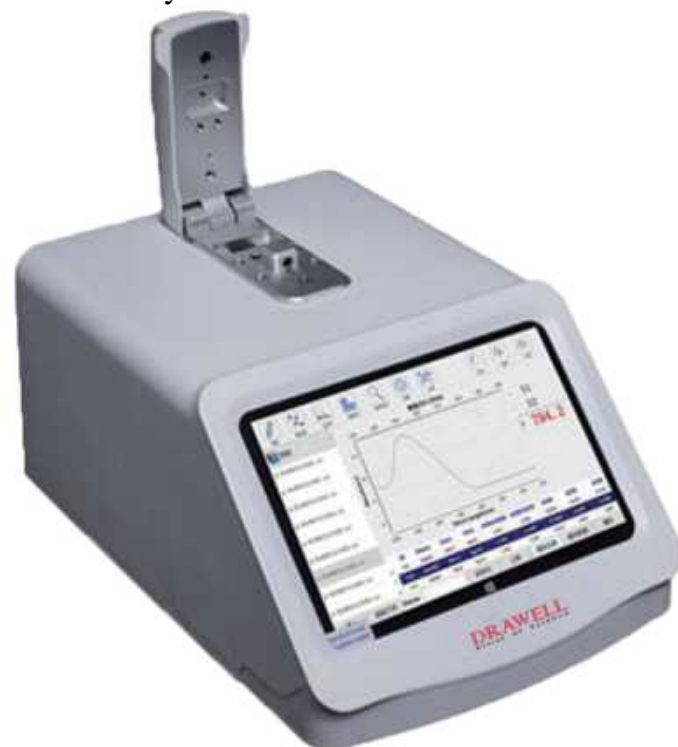
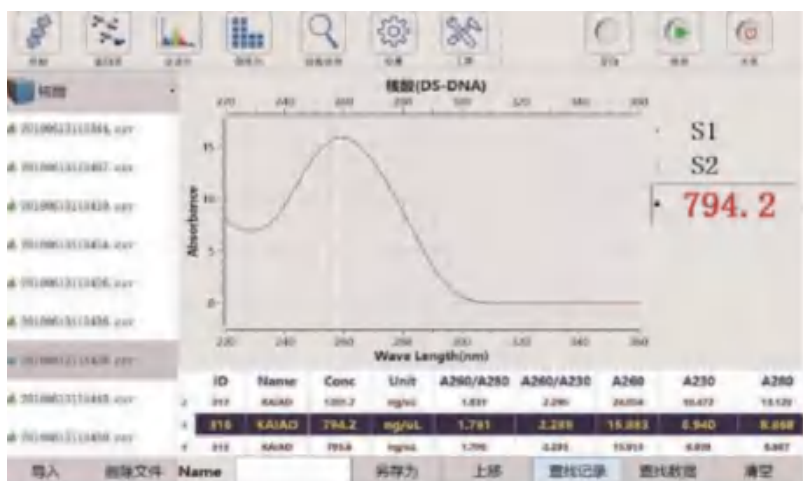
Micro - Spectrophotometer

Model: K5800/K5800C/K5800H/K5800T

The ultra-micro spectrophotometer is a new type of full-wavelength spectrophotometer, which can detect nucleic acid, protein, bacteria, cell bacteria, microarray samples, and conventional full-wavelength scanning, etc.

Features:

1. Platform material: stainless steel and quartz fiber.
2. No need to warm up, start testing at any time.
3. Built-in fiber to avoid fiber breakage caused by external force collision, resulting in chaotic measurement results
4. Instrument control and operation: built-in win10 system, built-in 7-inch high-definition display, full touch operation.
5. Data output method: Built-in ≥ 32 GB storage space.Users can directly store measurement result data and custom methods,which can be automatically saved in spreadsheet mode. USB output or network transfer data, with electronic manual.
6. Data output port: 2 USB ports, which can be connected to various devices such as mouse, keyboards, desktop computers, etc.
7. Built-in Bluetooth, WIFI, available to remote operation and print results data wirelessly.
8. With a liquid column to determine abnormal function.



Specifications

Light source	Long life pulsed xenon flash lamp
Detector	2048(CMOS) element linear silicide CCD array
Wavelength range	190~850nm
Wavelength accuracy	±1NM
Wavelength resolution	2nm (FWHM at Hg 546 nm)
Repeatability	<± 0.5nm
Light path	1mm, 0.05mm (optical path automatic conversion)
Nucleic Acid measurement range	0.2 ~ 37500ng / μl (dsDNA)
Protein measurement range	0.01 ~ 1120mg / ml (BSA)
Sample volume requirements	0.3 ~ 2 μL
Absorbance Accuracy	11% (0.76 absorbance at 350 nm)
Absorbance range	0.002 - 300Abs (equivalent to 10mm path length)

K5800C cuvette parameters	
Cuvette specifications (optical path)	1mm,2mm,5mm,10mm
Min sample volume of the cuvette	20 ul
The minimum height of the cuvette sample	5mm
Cuvette Type	A cuvette with a traceable cuvette specification
Cuvette Anechoic Chamber	A standard cuvette darkroom with a wide variety of cuvettes
Mixing system	Comes with mixing mixing system

K5800H Room Temperature-42℃	K5800T 10 ~ 42 ℃
-----------------------------	------------------

- 1. Through the USB port or network dump data
- 2. Without preheating, boot at any time detection
- 3. With a liquid column to determine abnormal function
- 4. With automatic measurement function, simplifying the operation process
- 5. Permanent preservation of data, at any time to export or delete data
- 6. Built-in wifi, remote operation can be achieved
- 7. The test result can be printed wirelessly
- 8. Built-in detection system; comes with high-definition display, touch screen operation

