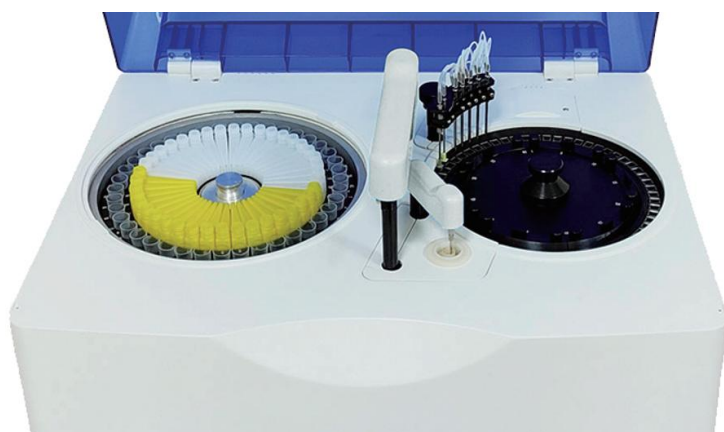


DW-TC200 Automatic Chemistry Analyzer



Features



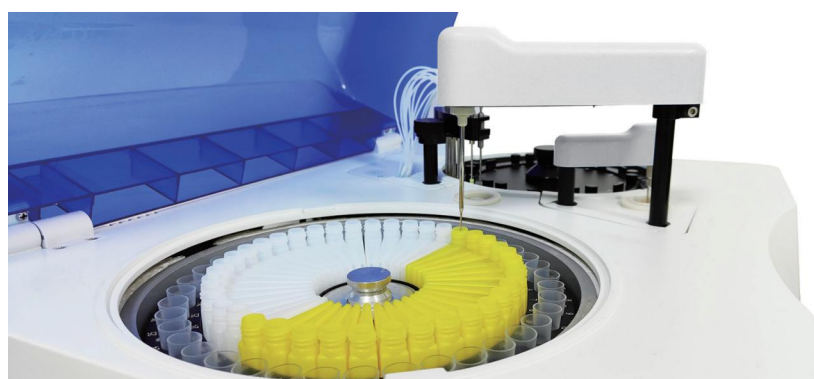
Sample/Reagent Position

- 40pcs sample position
- Reagent refrigerated function
- 40pcs reagent position



Reaction Cuvettes

- 60 pcs reusable plastic cuvettes
- Automatic blank testing for cuvette
- Colorimetry system in the pattern of light splitting behind cuvette
- Dismountable, easily replacement



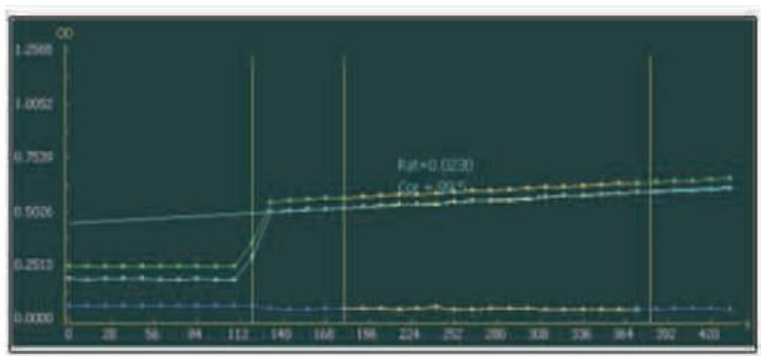
Sample/Reagent/Mixing Probe

- Automatic liquid level detect
- Collision protection function
- Probe internal/external washing
- Independent mixing probe



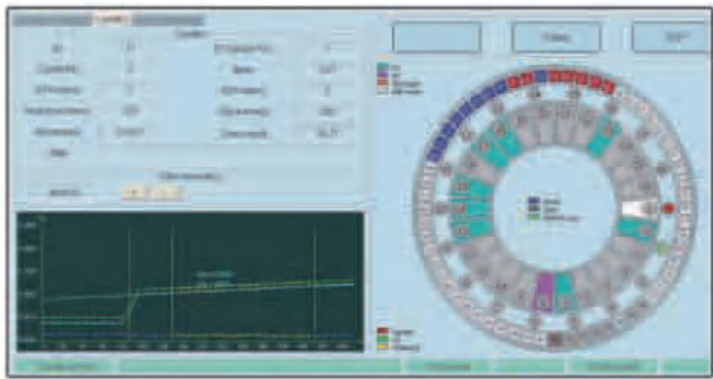
7-Step Auto Cleaning System

- Automatic 7-step washing
- Hi-tech washing station to ensure accurate results
- With low water consumption: 1-2L/H



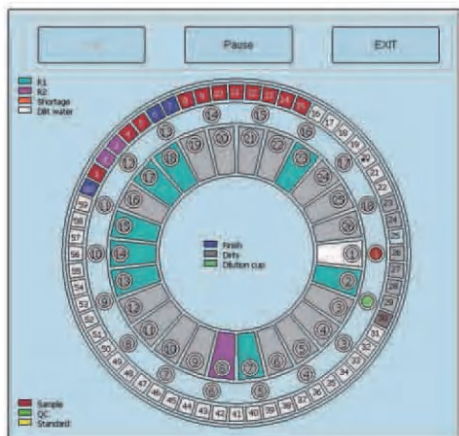
Optimum calibration cuvette

- Automatic Cuvette blank testing
- Automatic wash selected cuvettes



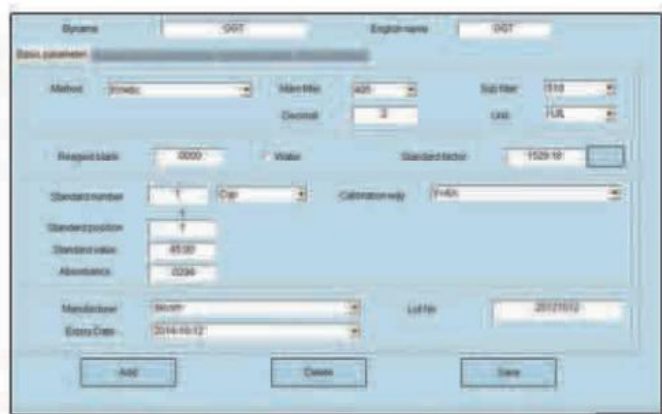
Intellective software

- Automatic washing cuvette when startup & shut down
- Automatic detect reagent volume during every startup
- Reagent plate temperature detecting when startup



Dynamic and Real-time display of running status

- Real-time online monitoring
- Running status of sample tray, reagent tray and cuvette
- Real-time online monitoring reagents residual volume
- Real-time online monitoring waste volume



Automatic dilute and re-test

- Automatic dilute and re-test when absorbance range is out of range
- Automatic dilute and re-test when linear limit is out of range
- Automatic dilute and re-test when linear range is out of range
- Freely set the auto dilute ratio and dilute water position

Specifications

A revolutionary automatic chemistry analyzer with	
Compact design	54.8cmX42.2cmX38.3cm
Easy to carry	net weight≤23kg
Optimal substitution of semi-auto chemistry analyzer	
Minimal labor required	
Independent mixing probe	
Utility of reagents decreased	300ul/test
Efficiency speed	200 tests/hour
User friendly	Smart and easy-operating software
High Accuracy	Minimal operating/random errors
High reputation from clinics	
System Functions	
Analysis Methods	end-point, kinetic, two-point,double-reagent, double-wavelength, multi-standard etc, open to various reagents

Sample/Reagents Handling	
Sample volume:	1.6-50ul,0.1ul step
Sample Dilution	Automatic/Manual pre-dilution, with dilution ratio up to 1:100
Reagent Position	40 pcs
Reagent Volume	10-500μl, 0.5μl step
Reaction System	
Reaction Cuvette	60 reusable plastic units
Optical Length of Cuvette	6mm
Reaction Volume	180~400μl
Max reaction Time	10 minutes
Reaction Temperature	37±0.1℃
Optical System	
Light Source	halogen-tungsten lamp
Wavelength	340-690nm,9 wavelengths, precision ±1.5nm
Absorbance Range	0~5.0 Abs
Resolution	0.0001 Abs
Rear spectrophotometry	
Calibration	
Calibration	Linear/nonlinear multi-points calibration
Re-test	retest the sample automatically when the result is out of the linearity range or the sample is not sufficient
Working Condition	
Power Supply	~100-240V,50/60Hz,300VA
Temperature	10-35℃
Humidity	≤90%, no dew
Operation System	
Windows 10 or Windows 7	
Input and Output	
Input	RS-232 interface/computer
Output	multi-format printout