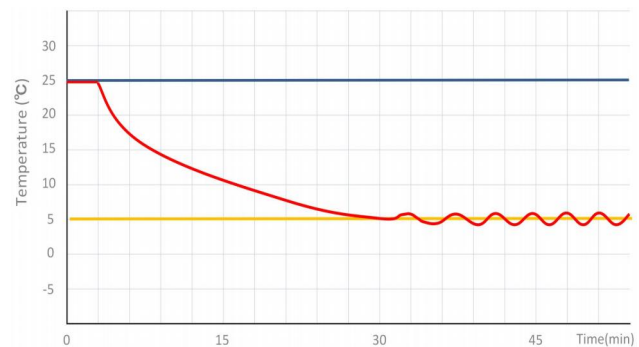


MPC-5V60G/60A

2~8 °C Pharmacy Refrigerator



MPC-5V60G 2~8°C Pharmacy Refrigerator (60 liter) is widely used in hospitals pharmacy stores and laboratories. This is for placing and preserving storage such as drugs, vaccines, enzymes and gene libraries and important biological and chemical reagents. The product has accurate temperature control with small footprint and easy to use.



MPC-5V60G Pull Down Curve

FEATURERS



Fast pull down

Real forced air cooling system



Specialized temp. sensor

High precise probe



Suction circulation system

Fan for better temp uniformity



Internal LED lighting

Easy to observe the interior



Lockable doors

3 Standard locks with keys for 3 doors



High-quality steel materials

Antibacterial and corrosion resistant



Precise temp. control

Temp. control accurate to 0.1°C



5 types of alarm

Audible and visual alarms



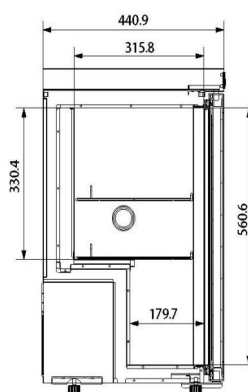
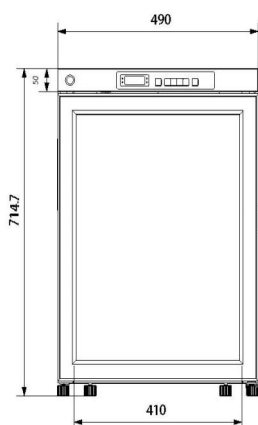
Variable space

Height adjustable shelves

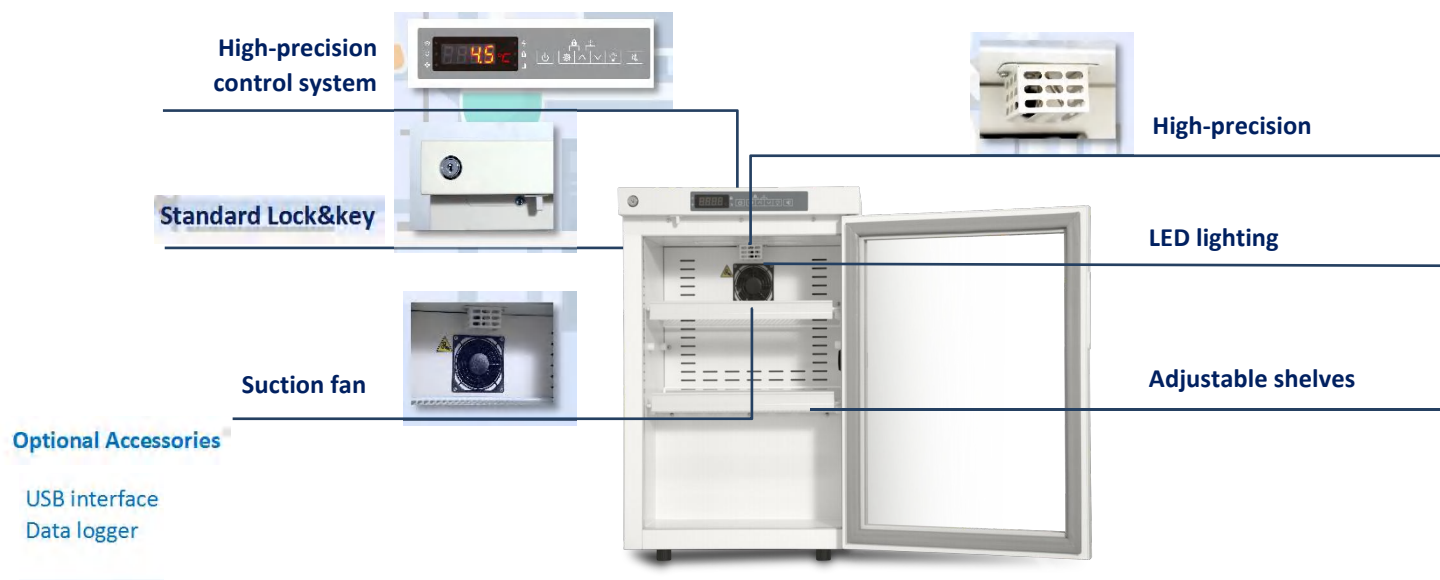


Eco-friendly

CFC-free refrigerant and energy-saving



STRUCTURE



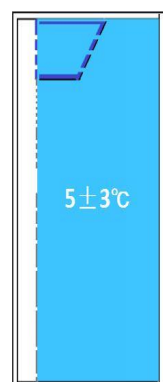
Low-E double-layer glass

High/low temp. alarm

Power failure alarm

Door ajar alarm

Thermostat failure alarm



Real forced air circulation and excellent refrigeration system pull down the chamber temperature rapidly. And keep the chamber with good temperature uniformity and fluctuation.

PARAMETER

Performance		Refrigeration System		Alarms	
Cooling method	Forced Air Cooling	Refrigerant	R600a	High/low temperature	Y
Defrost	Auto	Temp. controller	Microprocessor	Power failure	Y
Shelf/drawer	Shelves/2	Sensor	NTC	Sensor error	Y
Temperature range	2℃~8℃	Display	Digital display	Controller failure	Y
Ambient temperature	10~32℃	External material	SPCC sprayed steel	Door ajar	Y
Noise (db)	50	Compressor QTY	1	Power failure backup	8 hours

Electrical Data		Dimensions		Other	
Voltage frequency(V/Hz)	220V 50Hz/60Hz	Package size(W*D*H)(mm)	558*510*760	Inside door	2 shelves
Power (W)	72	Capacity (L/cu.ft)	100/3.53	Lighting	LED
Current (A)	0.59	Exterior size(W*D*H)(mm)	495*450*710	Access port QTY/Dia.	1/25mm
Power consumption	0.84kWh/24h	Interior size(W*D*H)(mm)	410*315*560	Internal material	SPCC sprayed steel