

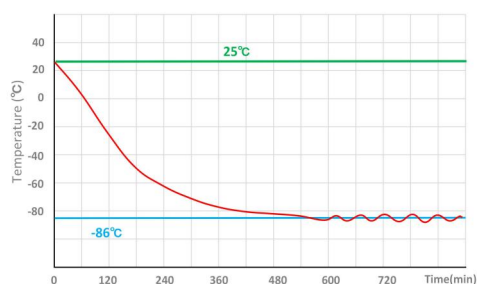


728 liters
50,400
samples

CASCADE SYSTEM ULT SERIES

-86°C ULT freezer is specially designed and manufactured for long term storage of various biological products, including viruses, germs, erythrocytes, leucocyte and cutis. Applications can be found in blood banks, hospitals, epidemic prevention service, and research institutes, laboratories in electronic and chemical plants and biological engineering institutes.

CASCADE SYSTEM



Pull down test at ambient temp. 25°C



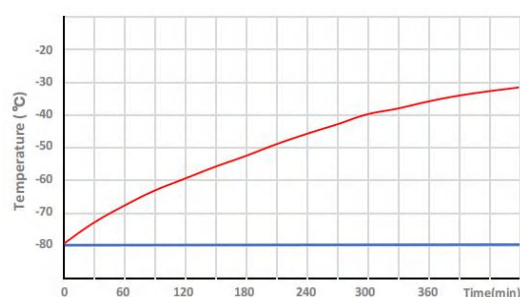
Advanced thermal insulation

METHER ULTs are designed with the latest generation of VIP technology to achieve thermal conductivity of 0.005 W(m.K). That makes ULTs more efficient in Insulation and less heat loss, so as to achieve the purpose of energy saving as well as space-saving.



Super-stable Cooling System

As the most mature ultra-low temperature refrigeration technology in the world, the cascade refrigeration technology has the characteristics of stable performance, easy maintenance and long service life.



Pull up test at ambient temp. 25°C



MDF-86V838



MDF-86V728



MDF-86V588

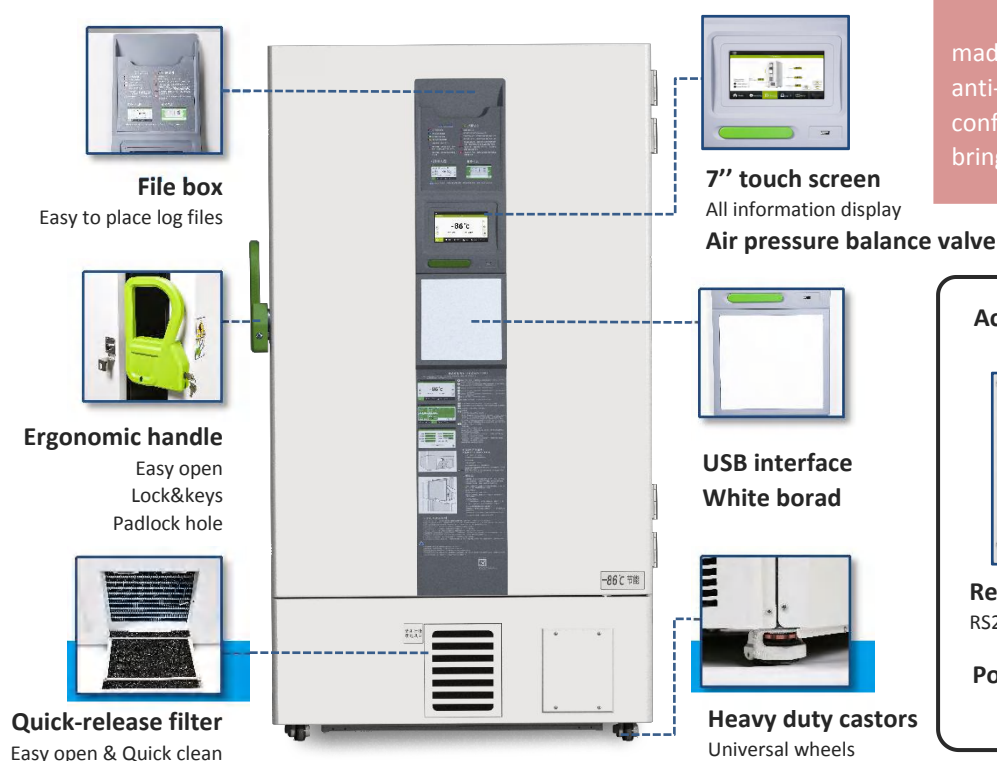


MDF-86V408

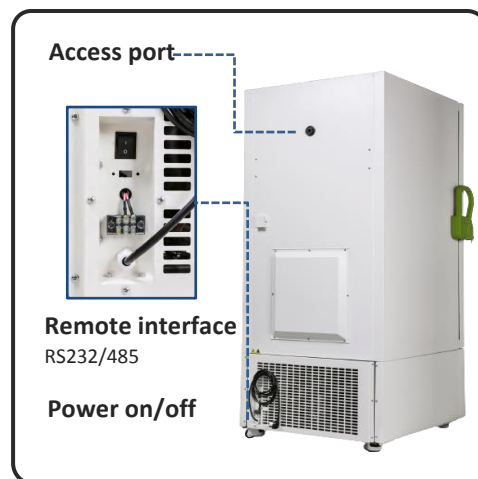


MDF-86V338

338 -838 liters
19,200-60,000 samples
for options



Drawell ULT freezers are made of color sprayed anti-bacterial and anti-corrosion cold-rolled steel. Various configurations and humanized designs bring great convenience to users.



FEATURERS



7" LCD touch screen

Easy operation and observation



Smart Operating System

Authorities, alarms, curve & events



Multi-layer sealing design

Better sealing, better insulation



International certifications

UL, ISO9001, ISO13485 & CE verified



Eco-friendly

CFC-free refrigerant & insulation



Energy saving

More efficient cooling system



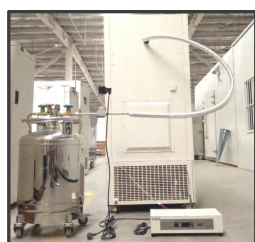
INTERNAL STRUCTURE



SPECIFICATIONS

Basic		Refrigeration System		Alarms	
Cooling type	Direct Cooling	Refrigerant	HC (R290&R170)	High/low temperature	Y
Defrost	Manual	Temp. controller	Microprocessor	Power failure	Y
Temperature range	-40℃~-86℃	System	Cascade system	Abnormal voltage	Y
Ambient temperature	10~32℃	Sensor	PTC	Sensor error	Y
Display	7" LCD touch screen	Compressor brand/QTY	SECOP/2	Door ajar	Y
Access port QTY/Dia.	1/25mm	Capacity(L/cu.ft)	728/25.70	Filter screen check	Y
USB Access	Y	Insulation	PURF+VIP	Thermostat failure	Y
Remote alarm Access	RS232/485	Inner door material/QTY	Foamed SUS304/2	Low battery	Y
Outside material	Color sprayed steel	Racks	18(5x4)+6(6x4)	Condenser clean	Y
Inside material	SUS304	Boxes (2 Inches)	504	High ambient temperature	Y
Castor	Universal	Samples(2ml)	50,400	Door ajar	Y
				Power failure backup (alarm)	72h
Electrical Data		Dimensions		Accessories	
Voltage frequency(V/Hz)	220V 50Hz/60Hz	Package size(W*D*H)(mm)	1320*970*2185	Chart recorder	Optional
Power(W)	935W	Exterior size(W*D*H)(mm)	1248*975*1994.5	Data logger	Optional
Current(A)	8.48A	Interior size(W*D*H)(mm)	963*558*1350	CO2 back up system	Optional
Power consumption	15.99kWh/24h	Shipping CBM	2.8	LN2 back up system	Optional
Noise(db)	53	N.W/G.W(kg)	360/401.5	Gloves	Optional

ACCESSORIES



LN₂/CO₂ backup system



Data logger



Chart recorder



Racks & Boxes



Gloves