



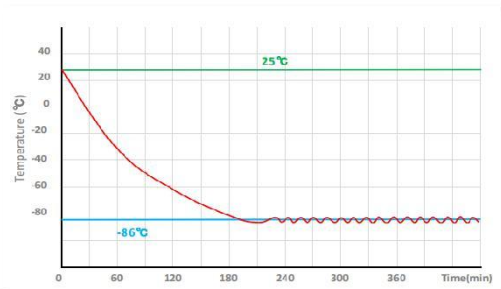
588 liters  
40,000  
samples



## AUTO-CASCADE SYSTEM SERIES

-86°C ULT freezer is specially designed and manufactured for long term storage of various biological products, including viruses, germs, erythrocytes, leucocyte and cutis. Applications can be found in blood banks, hospitals, epidemic prevention service, and research institutes, laboratories in electronic and chemical plants and biological engineering institutes.

## AUTO-CASCADE SYSTEM



Pull down test at ambient temp.



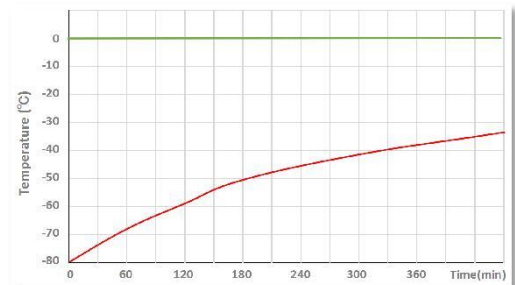
## Advanced thermal insulation

The insulation are designed with the latest generation of VIP technology to achieve thermal conductivity of 0.005 W(m.K). That makes ULTs more efficient in Insulation and less heat loss, so as to achieve the purpose of energy saving as well as space-saving.



## Super-cooling technology

The powerful cooling system drives the unique mixed refrigeration system for fast cooling down. This system is stable, energy saving and easy maintenance.



Pull up test at ambient temp. 25°C



MDF-86V588E

MDF-86V728E

MDF-86V838E

MDF-86V408E

MDF-86V340E

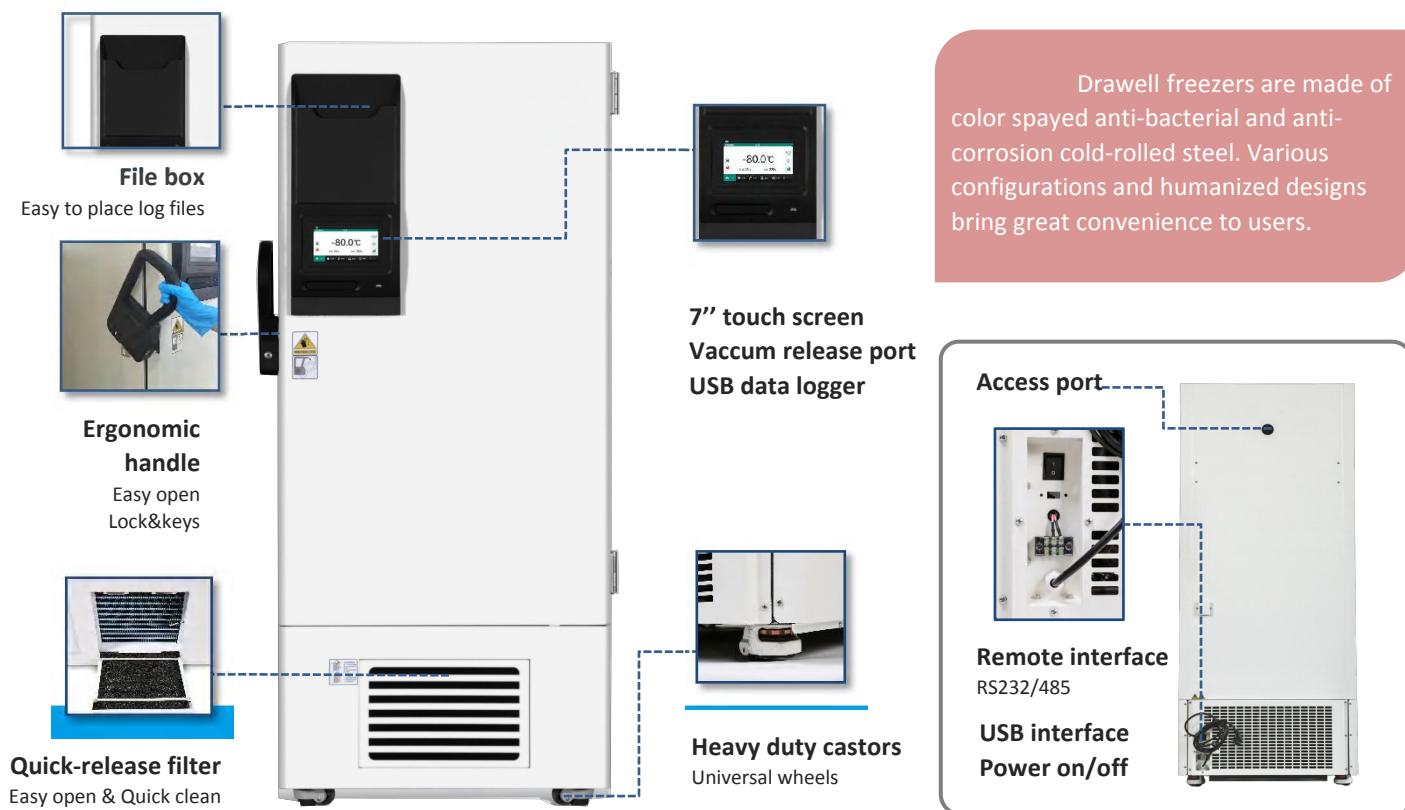
MDF-86V188E

MDF-86V58

58 -838 liters  
2,400-60,000  
samples

## EXTERNAL STRUCTURE

www.drawell.com.cn



## FEATURERS



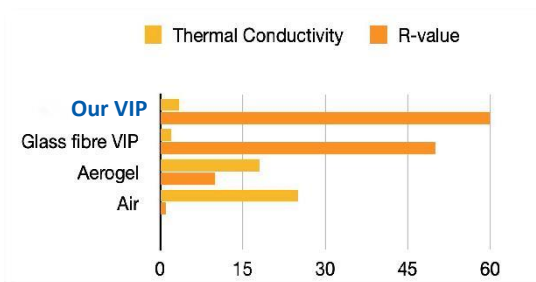
### 7" LCD touch screen

Easy operation and observation



### Smart Operating System

Authorities, alarms, curve & events



### Advanced insulation tech

Fumed Silicon V.I.P & PURF



### Multi-layer sealing design

Foamed inner doors with silicon gaskets



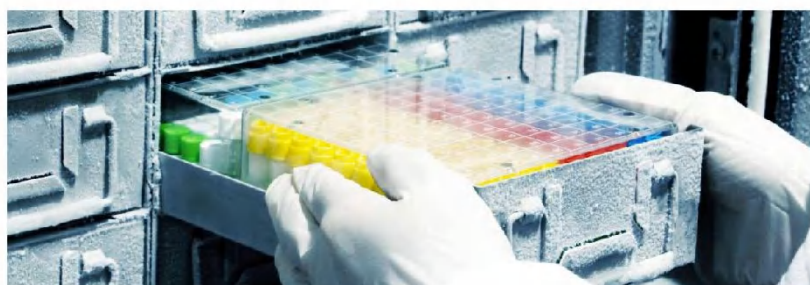
### Eco-friendly

CFC-free refrigerant & insulation



### Energy saving

More efficient cooling system



## INTERNAL STRUCTURE



Adjustable shelves



PTC sensor



Pressure-regulated inner door handle



Multi-layer silicone sealing gaskets  
Low temperature resistance



SUS 304 inner door filled with PURF  
Detachable design

ALL  
SUS 304  
inside



## SPECIFICATIONS

| Basic                |                     | Refrigeration System    |                  | Alarms                       |     |
|----------------------|---------------------|-------------------------|------------------|------------------------------|-----|
| Cooling method       | Direct Cooling      | Refrigerant             | R4001(mixed gas) | High/low temperature         | Y   |
| Defrost              | Manual              | Temp. controller        | Microprocessor   | Power failure                | Y   |
| Temperature range    | -40℃~-86℃           | System                  | Auto-cascade     | Abnormal voltage             | Y   |
| Ambient temperature  | 10~32℃              | Sensor                  | PTC 100          | Sensor error                 | Y   |
| Display              | LED digital         | Compressor brand/QTY    | SECOP/2          | Door ajar                    | Y   |
| Access port QTY/Dia. | 1/25mm              | Capacity(L/cu.ft)       | 588/20.76        | Filter screen check          | Y   |
| USB Interface        | Yes/1               | Insulation              | PURF+VIP         | Thermostat failure           | Y   |
| Remote alarm Access  | RS232/485           | Inner door material/QTY | Foamed SUS304/2  | Low battery                  | Y   |
| Outside material     | Color sprayed steel | Racks                   | 16(5X5)          | Condenser clean              | Y   |
| Inside material      | SUS304              | Boxes (2 Inches)        | 400              | High ambient temperature     | Y   |
| Castor               | Universal           | Samples(2ml)            | 40000            | Power failure backup (alarm) | 72h |

| Electrical Data         |                | Dimensions               |                 | Accessories        |          |
|-------------------------|----------------|--------------------------|-----------------|--------------------|----------|
| Voltage frequency(V/Hz) | 220V 50Hz/60Hz | Package size(W*D*H)(mm)  | 970*1138*2185   | Chart recorder     | Optional |
| Power(W)                | 1500W          | Exterior size(W*D*H)(mm) | 872*1192*1994.5 | Data logger        | Optional |
| Current(A)              | 10.35A         | Interior size(W*D*H)(mm) | 606*738*1310    | CO2 back up system | Optional |
| Power consumption       | 16.02KWh/24h   | Shipping CBM             | 2.42            | LN2 back up system | Optional |
| Noise(db)               | 53             | N.W/G.W(kg)              | 303/332         | Gloves             | Optional |

## ACCESSORIES



LN<sub>2</sub>/CO<sub>2</sub> backup system



Data logger



Chart recorder



Racks & Boxes



Gloves