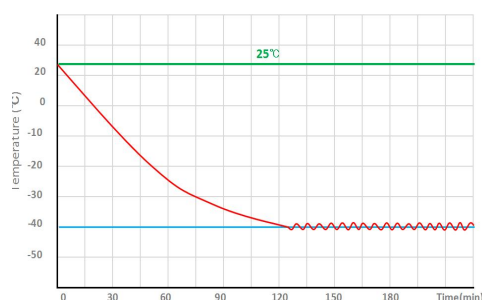




105 liters
3400
samples

AUTO-CASCADE SYSTEM CHEST DEEP FREEZER SERIES

-40°C Chest Deep freezer is specially designed and manufactured for long term storage of various biological products, including viruses, germs, erythrocytes, leucocyte and cutis. Applications can be found in blood banks, hospitals, epidemic prevention service, and research institutes, laboratories in electronic and chemical plants and biological engineering institutes.

AUTO-CASCADE SYSTEM

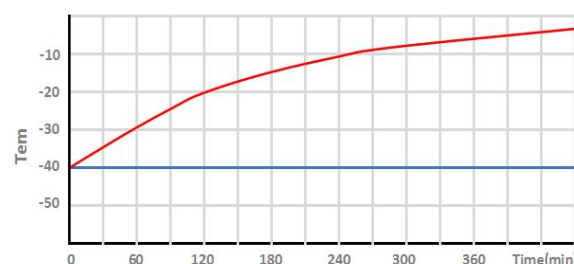
Pull down test at ambient temp.

**Super-cooling technology**

Auto-cascade cooling system is designed with a powerful compressor which drives the unique mixed refrigerant for fast cabinet cooling down. The system is simple in construction, energy saving and easy maintenance.

**Advanced thermal insulation**

Advanced insulation materials and interior design of multiple independent spaces make deep freezers more efficient in insulation and less heat loss, so as to achieve the purpose of better thermal insulation performance and energy saving.



Pull down test at ambient temp. 25°C



STRUCTURE

SUS 304 stainless steel lid
Thick PU foamed

Ergonomic handle
Easy open

Proven Hings
Hoverable top lid

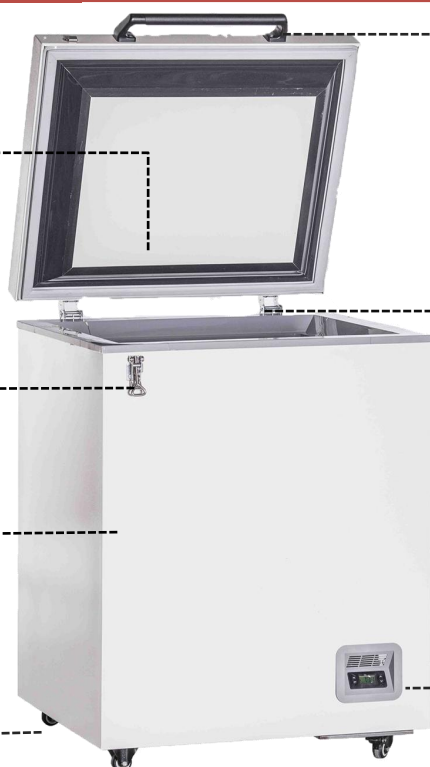
Buckle
with padlock port

Sturdy steel body
with thick PU foaming

Access port
for extra monitoring

Heavy duty castors
With brake

Temp. controller
Microcomputer



FEATURERS



Dixell Temp. Controller
Pricise and stable control



4 types of alarms
Audible and visual alarms



Multi-layer sealing design
Better sealing, better insulation



International certifications
ISO9001, ISO13485 & CE verified



Eco-friendly
CFC-free refrigerant & insulation



Energy saving
More efficient cooling system

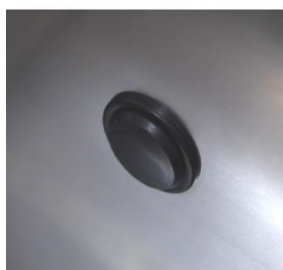


PRODUCT DETAILS

The deep freezers are made of color sprayed anti-bacterial and anti-corrosion cold-rolled steel. Various configurations and humanized designs bring great convenience to users.



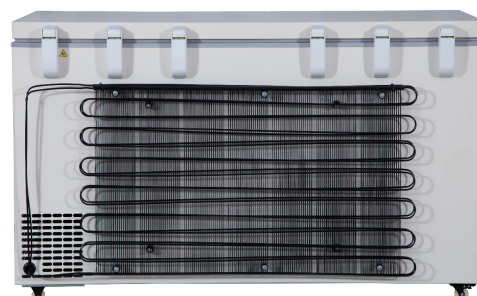
ALL
SUS 304
inside



Access port



Optional SS racks



Double-layer external condenser

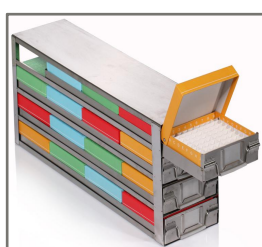
SPECIFICATIONS

Basic		Refrigeration System		Alarms	
Cooling method	Direct Cooling	Refrigerant	HC-R290	High/low temperature	Y
Defrost	Manual	Temp. controller	Microprocessor	Power failure	Y
Temperature range	-20℃~-40℃	System	Auto-cascade	Abnormal voltage	/
Ambient temperature	10~32℃	Sensor	NTC	Sensor error	Y
Display	LED digital	Compressor brand/QTY	CUBIGELN/1	Door ajar	/
Access port QTY/Dia.	1/25mm	Capacity(L/cu.ft)	105/3.70	Filter screen check	/
USB Interface	NO	Insulation	PURF	Thermostat failure	Y
Remote alarm Access	NO	Inner door material/QTY	/	Low battery	/
Outside material	Color sprayed steel	Optional Racks	2(11x1)+2(6x1)	Condenser clean	/
Inside material	SUS304	Boxes (2 Inches)	34	High ambient temperature	/
Castor	Universal	Samples(2ml)	3,400	Power failure backup	/
Electrical Data		Dimensions		Accessories	
Voltage frequency(V/Hz)	20V 50Hz/60Hz	Package size(W*D*H)(mm)	770*705*1090	SUS304 Racks	Optional
Power(W)	160W	Exterior size(W*D*H)(mm)	694*686*942	Data logger	Optional
Current(A)	1.36A	Interior size(W*D*H)(mm)	480*380*665	Baskets	Optional
Power consumption	1.65KWh/24h	Shipping CBM	0.55	Gloves	Optional
Noise(db)	50	N.W/G.W kg	62/70		

ACCESSORIES



Data logger



Racks & Boxes



Gloves



Baskets