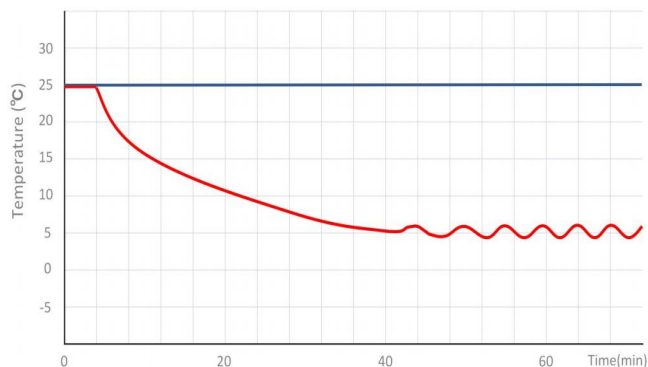


MPC-5V656

2~8 °C Pharmacy Refrigerator



MPC-5V656 2~8°C Pharmacy Refrigerator (656 liters) is widely used in hospitals pharmacy stores and laboratories. This is for placing and preserving storage such as drugs, vaccines, enzymes, hormones, stem cells, extracted RNA and gene libraries and important biological and chemical reagents.



MPC-5V656 PULL DOWN TEST

FEATURERS



Fast pull down

Real air-forced cooling system



Super large space

1006-liter (35.5 cu.ft) space, more storage



Suction circulation system

Big fans for better temp uniformity



Universal castor wheels

Castors with brake & leveling feet



Lockable doors

2 Standard locks with keys for 3 doors



High quality steel material

Antibacterial and corrosion resistant



Precise temp. control

Temp. control accurate to 0.1°C



5 types of alarm

Audible and visual alarms



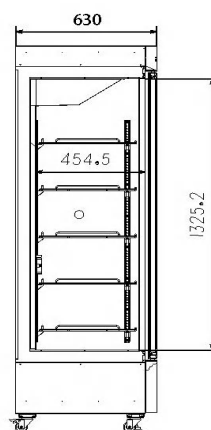
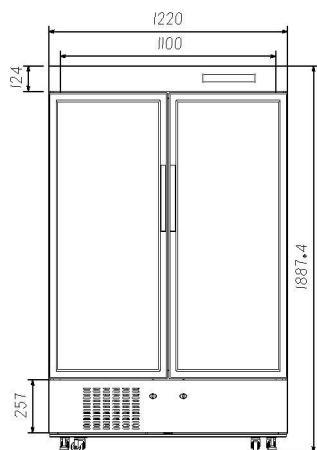
Variable space

Height adjustable shelves



Eco-friendly

CFC-free refrigerant and energy-saving



STRUCTURE

Temp. Sensor box

is used to simulate the real temperature inside the storage. So that the temperature measured by the probe is closer to the actual temperature of the contents in the cabinet.

Optional Accessories

Data logger
USB interface



High-precision
control system

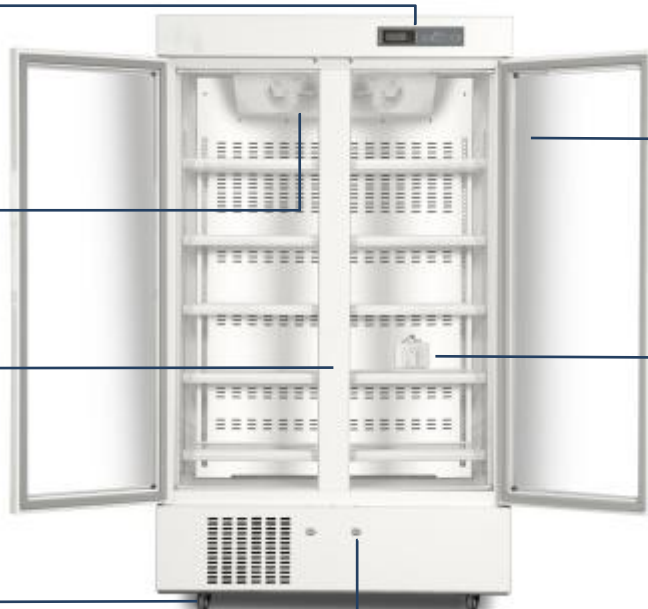


2 Large suction fans

Internal LED tube



Lockable castors
Leveling feet



Self closing doors
heating glass
Fast defogging



Sensor box

Lock&keys



Heating glass doors

High/low temp. alarm

Power failure alarm

Thermostat failure alarm

Door ajar alarm



Real forced air circulation and excellent refrigeration system pull down the chamber temperature rapidly and keep the chamber with good temperature uniformity and fluctuation.

PARAMETER

| Performance | | Refrigeration System | | Alarms | |
|---------------------|--------------------|----------------------|-----------------|----------------------|---------|
| Cooling method | Forced Air Cooling | Refrigerant | R290 | High/low temperature | Y |
| Defrost | Auto | Temp. controller | Microprocessor | Power failure | Y |
| Shelf/drawer | Shelves/10 | Sensor | NTC | Sensor error | Y |
| Temperature range | 2°C~8°C | Display | Digital display | Controller failure | Y |
| Ambient temperature | 10~32°C | External material | Sprayed steel | Door ajar | Y |
| Noise (db) | 52 | Compressor QTY | 1 | Power failure backup | 8 hours |

| Electrical Data | | Dimensions | | Other | |
|--------------------------|----------------|--------------------------|---------------|----------------------|---------------|
| Voltage frequency(V/Hz) | 220V 50Hz/60Hz | Package size(W*D*H)(mm) | 1335*710*2000 | Inside door | 10 shelves |
| Power (W) | 385W | Capacity (L/cu.ft) | 656/23.16 | Remote alarm port | Optional |
| Current (A) | 2.3A | Exterior size(W*D*H)(mm) | 1240*630*1895 | Access port QTY/Dia. | 1/25mm |
| Power consumption | 5.75kWh/24h | Interior size(W*D*H)(mm) | 1100*454*1325 | Internal material | Sprayed steel |