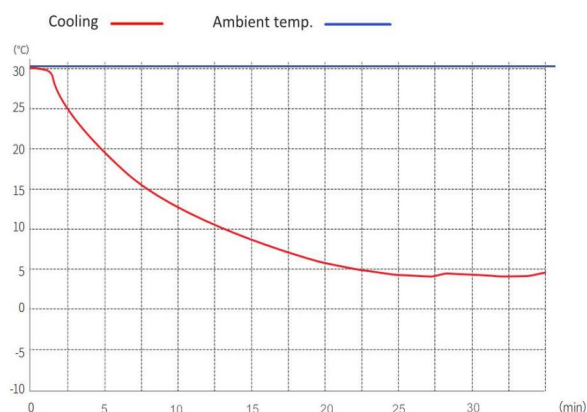


MPC-5V316

2~8 °C Pharmacy Refrigerator



MPC-5V316 2~8°C Pharmacy Refrigerator (316 liter) is widely used in hospitals pharmacy stores and laboratories. This is for placing and preserving storage such as drugs, vaccines, enzymes, hormones, stem cells, extracted RNA and gene libraries and important biological and chemical



MPC-5V316 Pull Down Curve

FEATURERS



Fast pull down

Real forced air cooling system



Temperature simulation

Accurately detect the temperature of



Suction circulation system

Big fans with less temp. fluctuation & better



Universal castor wheels

Proven heavy-duty lockable castors



Lockable doors

3 Standard locks with keys for 3 doors



High-quality steel materials

Antibacterial and corrosion resistant



Precise temp. control

Temp. control accurate to 0.1°C



5 types of alarm

Audible and visual alarms



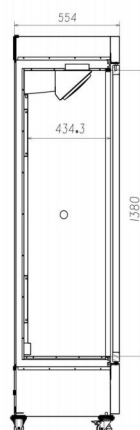
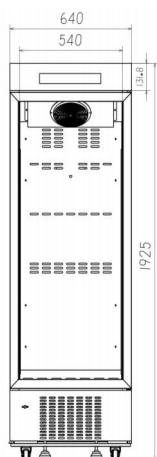
Variable space

Height adjustable shelves



Eco-friendly

CFC-free refrigerant and energy-saving



STRUCTURE

Temp. simulation box is used to simulate the real temperature inside the storage. So that the temperature measured by the probe is closer to the actual temperature of the

Optional Accessories

USB interface
Data logger

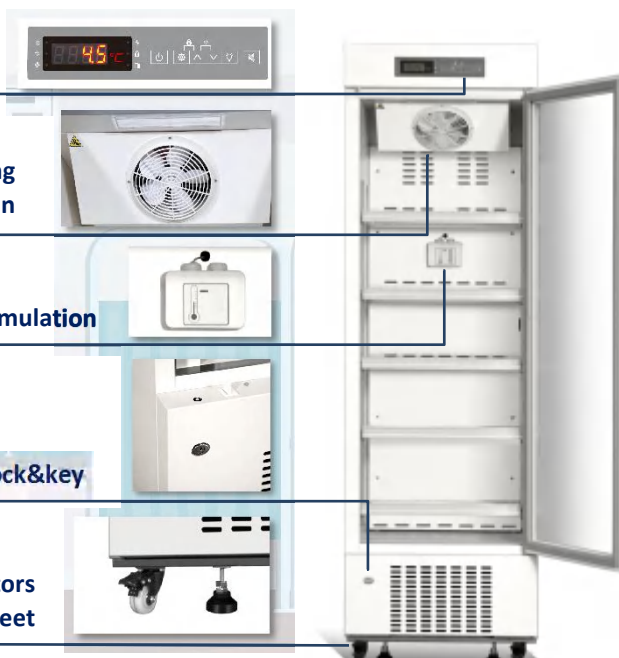
High-precision control system

LED lighting Big Suction fan

Temperature simulation

Standard Lock&key

Lockable castors Leveling feet



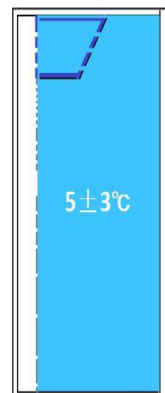
Low-E double-layer glass

High/low temp. alarm

Power failure alarm

Door ajar alarm

Thermostat failure alarm



Real forced air circulation and excellent refrigeration system pull down the chamber temperature from 25°C to 5°C in 26 minutes (at ambient temp. 25°C). And keep the chamber with good temperature uniformity and fluctuation.

PARAMETER

Performance		Refrigeration System		Alarms	
Cooling method	Forced Air Cooling	Refrigerant	R290	High/low temperature	Y
Defrost	Auto	Temp. controller	Microprocessor	Power failure	Y
Shelf/drawer	Shelves/5	Sensor	NTC	Sensor error	Y
Temperature range	2°C~8°C	Display	Digital display	Controller failure	Y
Ambient temperature	10~32°C	External material	SPCC sprayed steel	Door ajar	Y
Noise (db)	50	Compressor QTY	1	Power failure backup	8 hours
Electrical Data		Dimensions		Other	
Voltage frequency(V/Hz)	220V 50Hz/60Hz	Package size(W*D*H)(mm)	720*680*2040	Inside door	5 shelves
Power (W)	228W	Capacity (L/cu.ft)	316/11.15	Remote alarm port	Optional
Current (A)	1.2A	Exterior size(W*D*H)(mm)	660*555*1915	Access port QTY/Dia.	1/25mm
Power consumption	1.78kWh/24h	Interior size(W*D*H)(mm)	540*425*1380	Internal material	SPCC sprayed steel