

MDS300 Inverted Metallurgical Microscope

- ●Combination with bright field, polarizing observation etc. Widely used in metal, mineral, electronic industry



● MDS300 Inverted Metallurgical Microscope



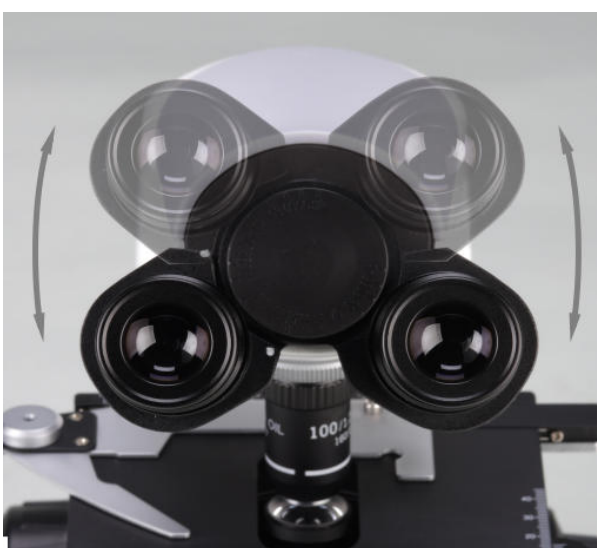
● MDS300 Inverted Metallurgical Microscope with Digital Camera



● Large size three-layer working stage, more choice for samples.



- 5V-12V Low voltage input to ensure safe use
- Power bank can be used for power supply, more convenient for field inspection and power-short condition



- New designed and humanized butterfly binocular head-tubes which can be 360° rotated to raise observing height position than normal tubes to be more convenient for users with different height.



- Built In LED illumination system which can be powered with power bank, laptop and vehicle power supply ensure being used anywhere and any condition

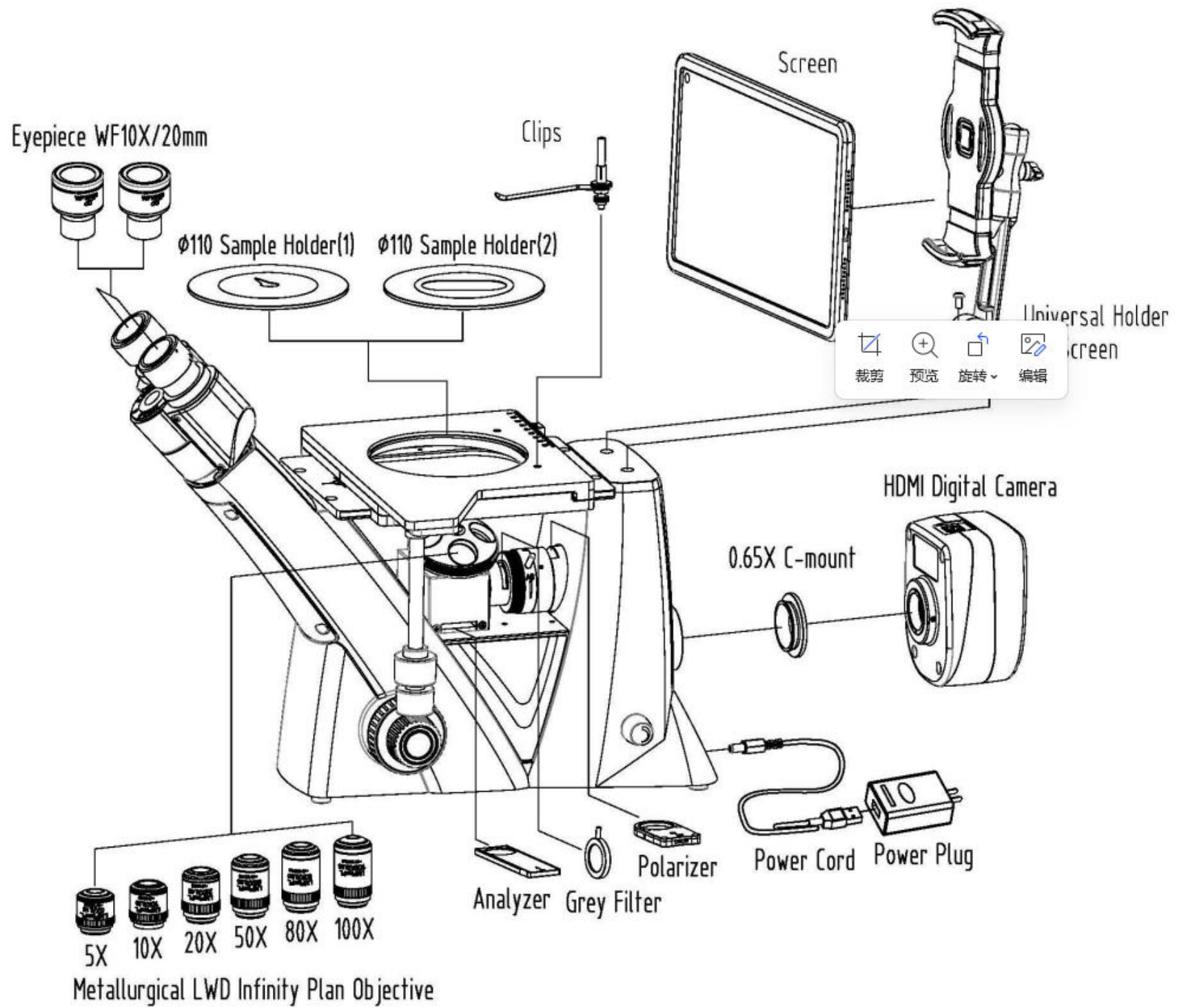


● Optional Universal Holder for Screen

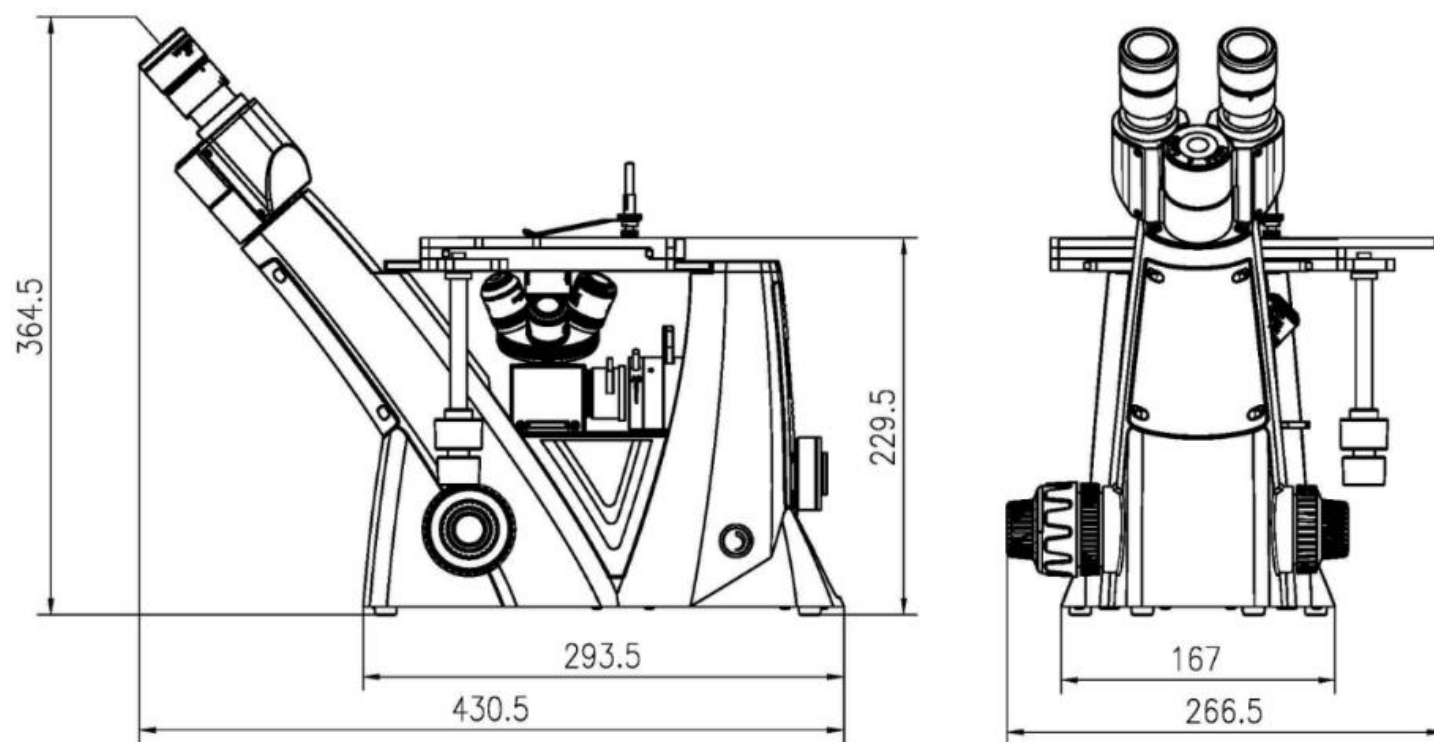


Analyzer & Polarizer for simple polarizing observation

MDS300 Inverted Metallurgical Microscope General Layout Diagram



MDS300 Inverted Metallurgical Microscope Size(mm)



MDS300 Inverted Metallurgical Microscope Outfits

| Items | Specification | MDS300 |
|--|--|--------|
| Eyepiece | WF10X/20mm (High eye-point) | ● |
| | WF10X/20mm (High eye-point, adjustable Focus,Reticule 0.1mm) | ● |
| Metallurgical LWD Infinity Plan Objectives | LPL 5× / 0.15 W.D.=15.00mm | ● |
| | LPL 10× / 0.25 W.D.= 18.48mm | ● |
| | LPL 20× / 0.40 W.D.= 8.35mm | ● |
| | LPL 50× / 0.75 W.D.= 2.55mm | ● |
| | LPL 80× / 0.80 W.D.= 0.85mm | ○ |
| | LMPlan FL 100× / 0.85(Dry) W.D.= 3.00mm | ○ |
| Butterfly Siedentopf Head | Eyepiece tube 360°rotated, Inclined 45°, IPD: 48-75mm, Light distribution: 70:30 (70% for eyepiece,and 30% for camera tube) | ● |
| Nosepiece | Quadplex | ● |
| Mechanical Stage | Stage size: 180 mm×155mm, Moving range:75×40mm , Scale : 0.1mm, Round slide size : φ110mm | ● |
| Coaxial Coarse and Fine Focusing unit | Coarse stroke: 10mm, Fine stroke per rotation: 0.2mm, fine division 2 μm. | ● |
| Polarizing Unit | Polarizer /Analyzer | ● |
| Illumination | 5WLED Warm lamp (Input voltage: 100V~240V) | ● |
| Filter | Grey | ○ |
| C-mount | 0.65×C-Mount (built-in) | ● |
| Universal Holder for Screen | The Max. height is 22mm | ○ |

Note: "●" In Table Is Standard outfits, "○" Is Optional Accessories.

Packing Size: 500mmx425mmx305mm Gross Weight:9.0 kgs Net Weight: 7.0 kgs

MDS300 with Digital Camera & Tablet



Note: it can add Android or IOS tablet or HDMI Screen when your camera has HDMI/WiFi