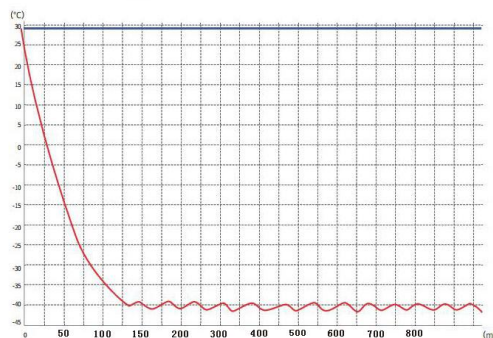




**MDF-40V936** (936L Medical Deep Freezer) is widely used in hospitals and laboratories. This is for placing and preserving storage such as drugs, vaccines, blood, enzymes, hormones, stem cells, extracted RNA and gene libraries and important biological and chemical reagents.



Fast pull down

## FEATURERS



### Fast pull down

Better cooling performance



### Coil evaporator

Better temperature uniformity



### Inner-door design

4 individual inner door



### Universal castor wheels

Proven heavy-duty castors with brake



### Lockable doors

Standard locks with keys



### SUS 304 materials

Antibacterial and corrosion resistant



### Precise temp. control

Temp. control accurate to 0.1°C



### 7 types of alarm

Audible and visual alarms



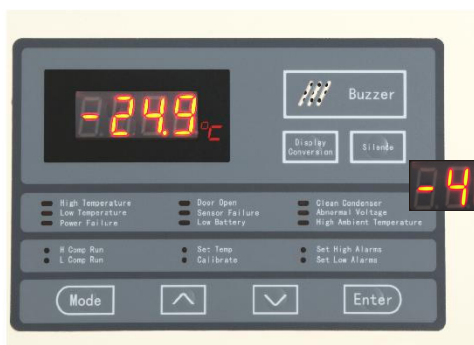
### USB Interface

10 years data for downloading



### Eco-friendly

CFC-free refrigerant and energy-saving



Full information display

## STRUCTURE



Ambient temp alarm

Sensor erro alarm

High/low temp. alarm

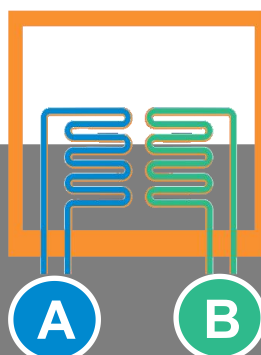
Power failure alarm

Door ajar alarm

Thermostat failure alarm

Abnormal voltage alarm

-40°C



Dual system is designed with 2 independent cooling systems which provides extra insurance for Bio-samples. Should one system unexpectedly fail, the other will maintain a temperature in the -40°C range ensuring that the sensitive samples not put at risk separately.

## PARAMETER

Performance		Refrigeration System		Alarms	
Cooling method	Direct Cooling	Refrigerant	R404a	High/low temperature	Y
Defrost	Manual	Temp.controller	Microprocessor	Power failure	Y
Shelf/drawer	Shelves/4	Sensor	NTC	Sensor error	Y
Temperature range	25°C~-40°C	Display	Digital display	Controller failure	Y
Ambient temperature	10~32°C	External material	SPCC sprayed steel	Door ajar	Y
Noise (db)	50	Compressor QTY	SECOP/2	Power failure backup	72H
Electrical Data		Dimensions		Other	
Voltage frequency(V/Hz)	220V50Hz/60Hz	Package size(W*D*H)(mm)	1350*1080*2150	Inner door Qty	4
Power (W))	1000W	Capacity (L/cu.ft)	936/33	Remote alarm port	Optional
Current(A)	5.8A	Exteriorsize(W*D*H)(mm)	1320*980*2100	Access port QTY/Dia.	1/25mm
Power consumption	14.5kWh/24h	Interior size (W'D'H)(mm)	1000*700*1335	Internal material	SUS 304