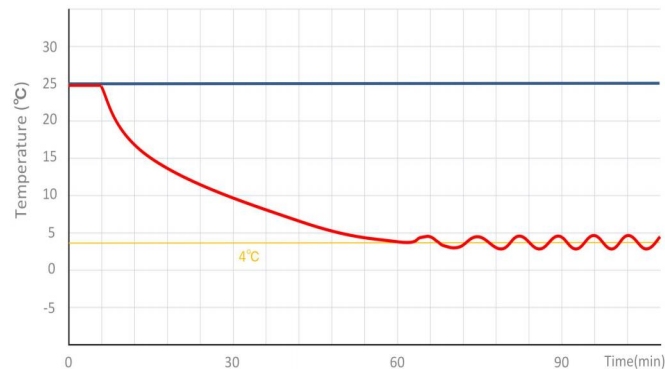


# MBC-4V1008

## 4 °C Blood Bank Refrigerator



**MBC-4V1008** Blood bank refrigerator (1008 liter) is an essential piece of equipment in the immunohematology department and provides safe and convenient storage of whole blood, blood components (e.g., blood cells, plasma), and reagents. It ensures freshness and integrity of blood and blood components. MBC-4V1008 can store a total of 576 units of 450ml blood bags.



MBC-4V1008 pull down test

## FEATURERS



### Fast pull down

Real forced air cooling system



### Temp. simulation box

Accurately detect the temperature of blood



### Suction circulation system

Big fans for better temp uniformity



### Universal castor wheels

Proven heavy-duty lockable castors



### Lockable doors

3 Standard locks with keys for 3 doors



### High-quality SUS 304

Antibacterial and corrosion resistant



### Precise temp. control

Temp. fluctuation is controlled at  $4 \pm 0.5^\circ\text{C}$



### 5 types of alarm

Audible and visual alarms



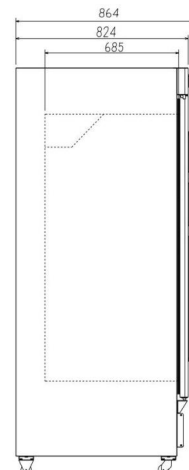
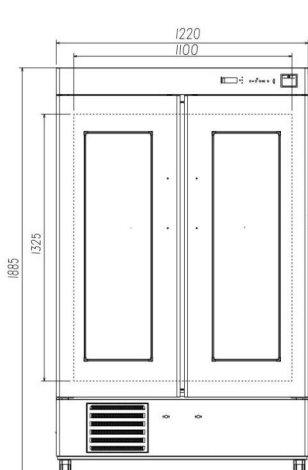
### Variable space

Adjustable shelves and baskets



### Eco-friendly

CFC-free refrigerant and energy-saving



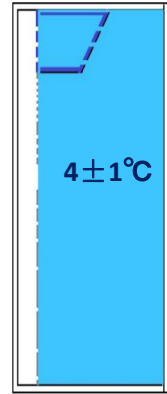
# STRUCTURE



Temp. sensor box is used to simulate the real temperature of the internal blood.



- Heating foamed glass door
- Thermal printer
- High/low temp. alarm
- Door ajar alarm
- Power failure alarm
- Controller malfunction



Real forced air circulation and excellent refrigeration system pull down the chamber temperature rapidly. Precise cooling technology keeps the temperature inside the chamber constant at  $4 \pm 1^\circ\text{C}$

# PARAMETER

Performance		Refrigeration System		Alarms	
Cooling method	Forced Air Cooling	Refrigerant	R134a	High/low temperature	Y
Defrost	Auto	Temp. controller	Microprocessor	Power failure	Y
Shelf/drawer	Drawer/12	Sensor	NTC	Thermostat failure	Y
Temperature range	$4 \pm 1^\circ\text{C}$	Display	Digital display	Controller malfunction	Y
Ambient temperature	$10 \sim 32^\circ\text{C}$	External material	SPCC sprayed steel	Door ajar	Y
NT./GT.	265/335	Capacity (L/cu.ft)	1008/35.6	Backup battery for alarms	8 hrs
Electrical Data		Dimensions		Other	
Voltage frequency( V/Hz)	220V 50Hz/60Hz	Package size(W*D*H)(mm)	1325*970*2130	Inside door	12 drawers
Power (W)	513	Exterior size(W*D*H)(mm)	1240*860*1895	Remote alarm port	Optional
Current (A)	2.4	Interior size(W*D*H)(mm)	1100*684*1325	Access port QTY/Dia.	1/25mm
Power consumption	8.53kWh/24h	CBM	2.74	Internal material	SUS 304
Compressor QTY	1 SECOP	Bloodbags(450ml)	576	Noise (db)	53.6