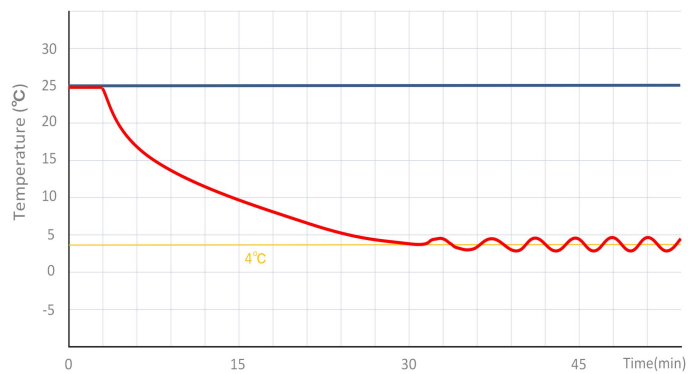


# MBC-4V368

## 4 °C Blood Bank Refrigerator



**MBC-4V368** Blood bank refrigerator (368 liter) is an essential piece of equipment in the immunohematology department and provides safe and convenient storage of whole blood, blood components (e.g., blood cells, plasma), and reagents. It ensures freshness and integrity of blood and blood components. MBC-4V368 can store a total of 200 units of 450ml blood bags.



MBC-4V368 pull down times

## FEATURERS



### Fast pull down

Real forced air cooling system



### Temp. simulation box

Accurately detect the temperature of blood



### Suction circulation system

Big fans for better temp. uniformity



### Universal castor wheels

Proven heavy-duty lockable castors



### Lockable doors

Built-in lock with key



### High-quality SUS 304

Antibacterial and corrosion resistant



### Precise temp. control

Temp. fluctuation is controlled at  $4 \pm 0.5^\circ\text{C}$



### 5 types of alarm

Audible and visual alarms



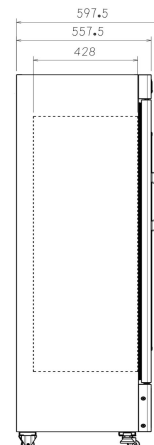
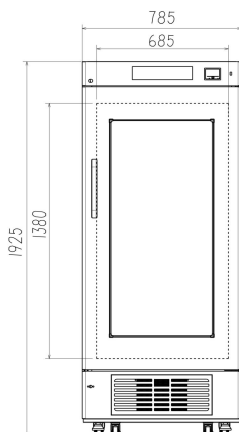
### Variable space

Adjustable shelves and baskets

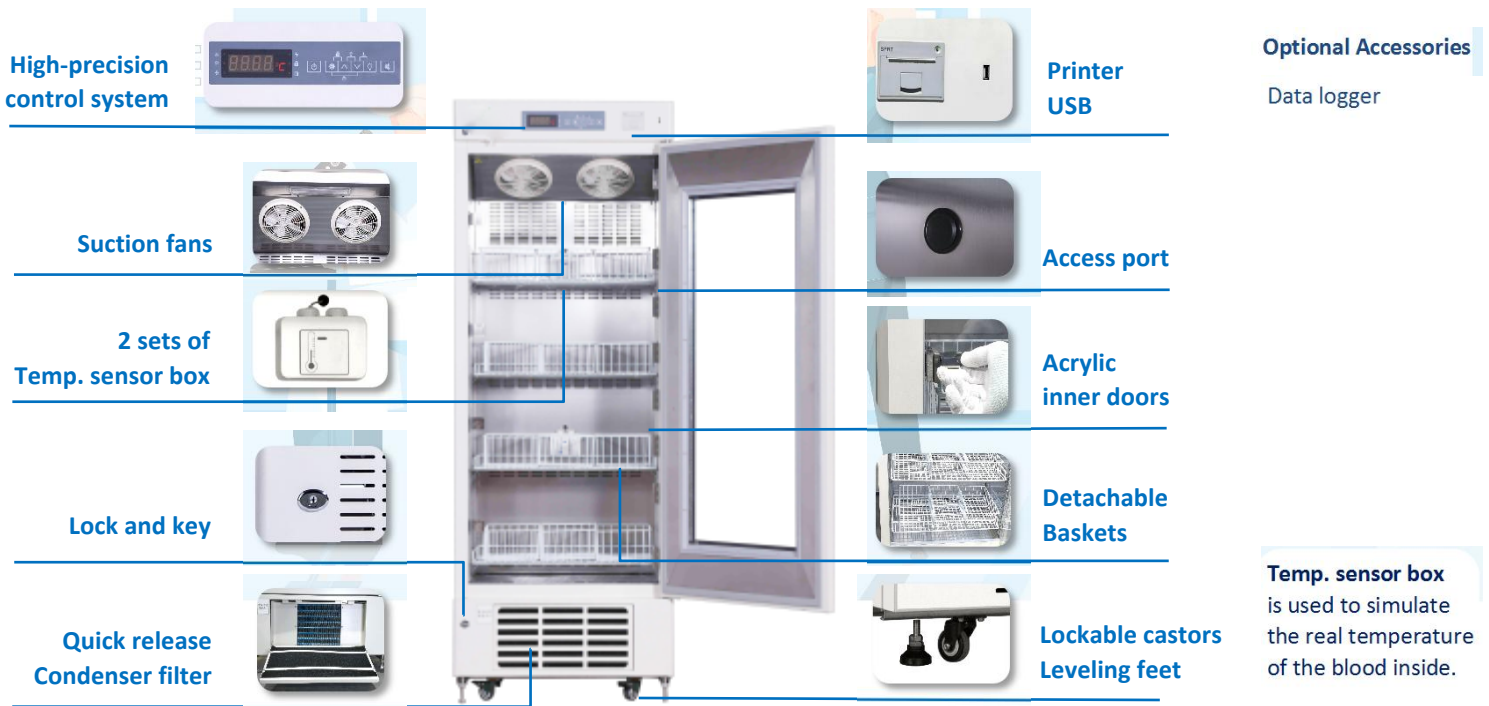


### Eco-friendly

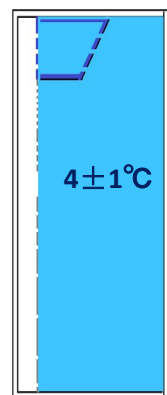
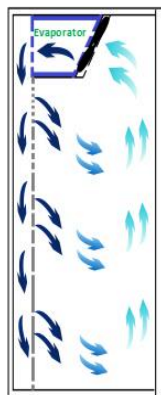
CFC-free refrigerant and energy-saving



# STRUCTURE



- Heating foamed glass door
- Thermal printer
- High/low temp. alarm
- Door ajar alarm
- Power failure alarm
- Controller malfunction



Real forced air circulation and excellent refrigeration system pull down the chamber temperature rapidly. Precise cooling technology keeps the temperature inside the chamber constant at  $4 \pm 1^\circ\text{C}$

# PARAMETER

Performance		Refrigeration System		Alarms	
Cooling method	Forced Air Cooling	Refrigerant	R134a	High/low temperature	Y
Defrost	Auto	Temp. controller	Microprocessor	Power failure	Y
Shelf/drawer	Shelves/6	Sensor	NTC	Thermostat failure	Y
Temperature range	$4 \pm 1^\circ\text{C}$	Display	Digital display	Controller malfunction	Y
Ambient temperature	$10 \sim 32^\circ\text{C}$	External material	SPCC sprayed steel	Door ajar	Y
NT./GT.	128/135	Capacity (L/cu.ft)	368/12.98	Backup battery for alarms	72 hrs
Electrical Data		Dimensions		Other	
Voltage frequency (V/Hz)	220V 50Hz/60Hz	Package size(W*D*H)(mm)	890×650×2100	Inside door	12 baskets
Power (W)	325	Exterior size(W*D*H)(mm)	785×565×1920	Remote alarm port	Optional
Current (A)	0.8	Interior size(W*D*H)(mm)	685×429×1380	Access port QTY/Dia.	1/25mm
Power consumption	4.28kWh/24h	Bloodbags(200ml)	540 bags	Blood baskets	30 pcs
Compressor QTY	1 EMBRACO	Bloodbags(450ml)	360 bags	Noise (db)	51.2