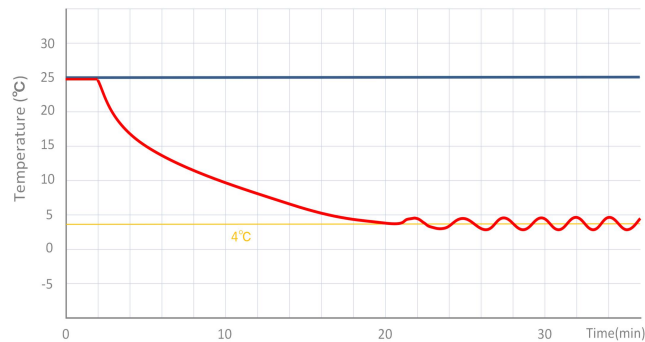


MBC-4V208

4 °C Blood Bank Refrigerator



MBC-4V208 Blood bank refrigerator (208 liter) is an essential piece of equipment in the immunohematology department and provides safe and convenient storage of whole blood, blood components (e.g., blood cells, plasma), and reagents. It ensures freshness and integrity of blood and blood components. MBC-4V208 can store a total of 132 units of 450ml blood bags.



MBC-4V208 pull down test

FEATURERS



Fast pull down

Real forced air cooling system



Temp. simulation box

Accurately detect the temperature of blood



Suction circulation system

Big fans for better temp uniformity



Universal castor wheels

Proven heavy-duty lockable castors



Lockable doors

3 Standard locks with keys for 3 doors



High-quality SUS 304

Antibacterial and corrosion resistant



Precise temp. control

Temp. fluctuation is controlled at $4 \pm 0.5^\circ\text{C}$



5 types of alarm

Audible and visual alarms



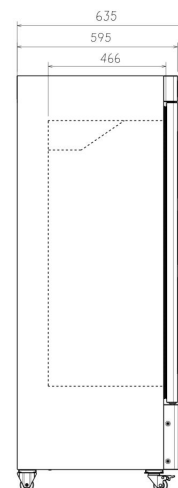
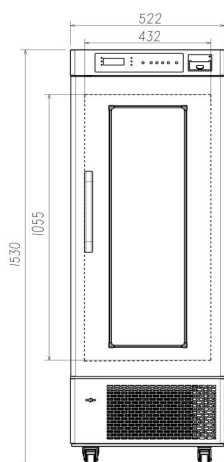
Variable space

Adjustable shelves and baskets

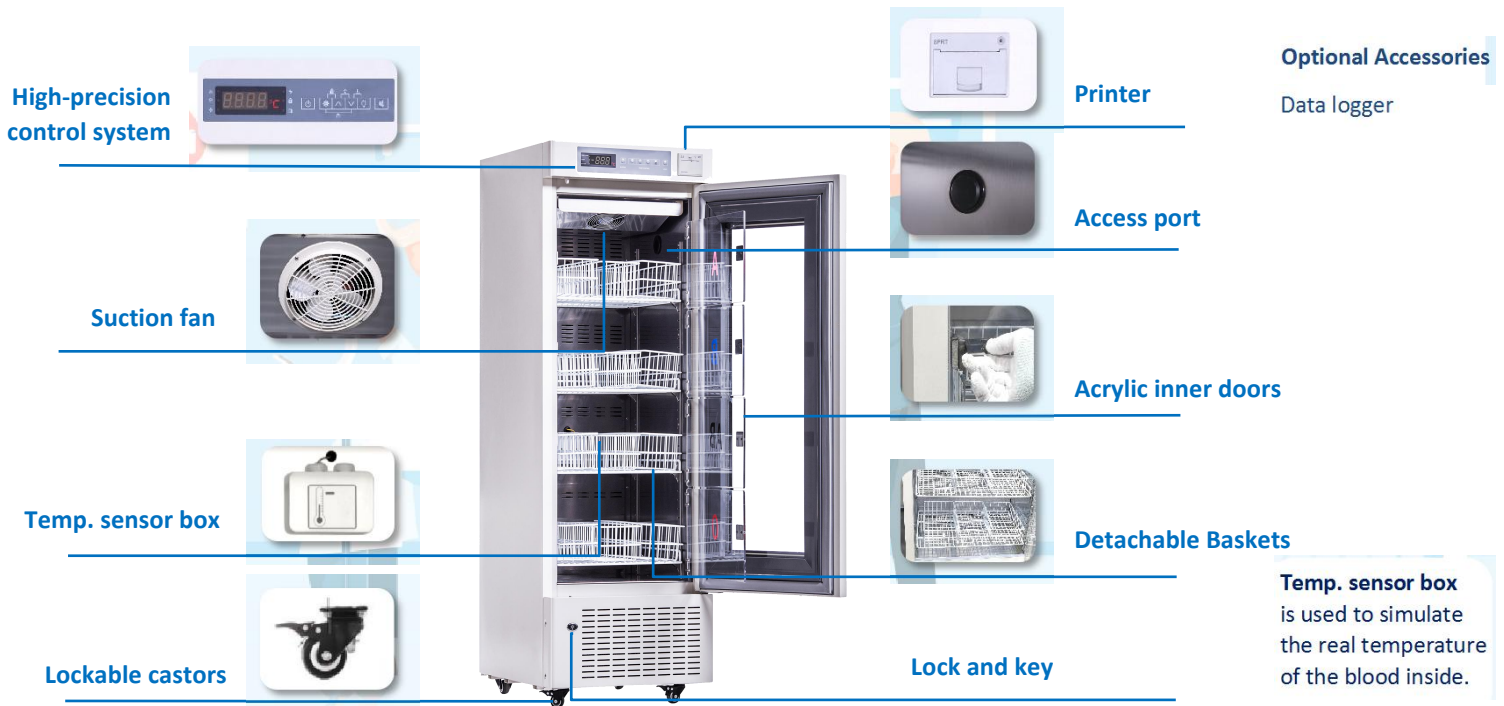


Eco-friendly

CFC-free refrigerant and energy-saving



STRUCTURE



Heating foamed glass door

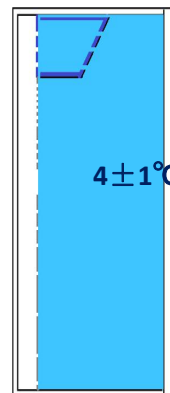
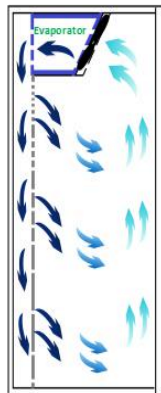
Thermal printer

High/low temp. alarm

Door ajar alarm

Power failure alarm

Controller malfunction



Real forced air circulation and excellent refrigeration system pull down the chamber temperature rapidly. Precise cooling technology keeps the temperature inside the chamber constant at $4 \pm 1^\circ\text{C}$

PARAMETER

Performance		Refrigeration System		Alarms	
Cooling method	Forced Air Cooling	Refrigerant	R134a	High/low temperature	Y
Defrost	Auto	Temp. controller	Microprocessor	Power failure	Y
Shelf/drawer	Shelves/4	Sensor	NTC	Thermostat failure	Y
Temperature range	$4 \pm 1^\circ\text{C}$	Display	Digital display	Controller malfunction	Y
Ambient temperature	$10 \sim 32^\circ\text{C}$	External material	SPCC sprayed steel	Door ajar	Y
NT./GT.	96/120	Capacity (L/cu.ft)	208/7.34	Backup battery for alarms	8 hrs
Electrical Data		Dimensions		Other	
Voltage frequency(V/Hz)	220V 50Hz/60Hz	Package size(W*D*H)(mm)	590*700*1700	Inside door	12 baskets
Power (W)	183W	Exterior size(W*D*H)(mm)	540*640*1530	Remote alarm port	Optional
Current (A)	0.8	Interior size(W*D*H)(mm)	432*462*978	Access port QTY/Dia.	1/25mm
Power consumption	2.22kWh/24h	CBM	0.7	Internal material	SUS 304
Compressor QTY	1 EMBRACO	Bloodbags(450ml)	132	Noise (db)	51.2