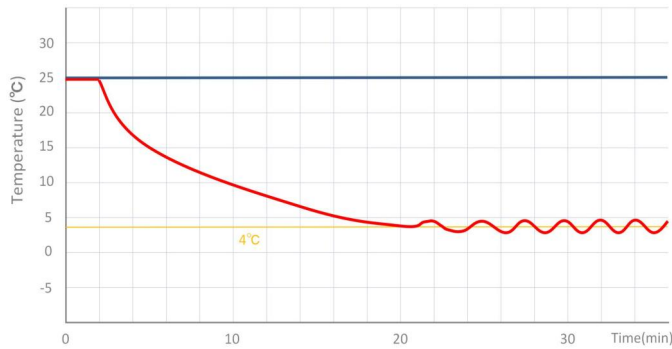


MBC-4V108

4 °C Blood Bank Refrigerator

MBC-4V108 Blood bank refrigerator (108 liter) is an essential piece of equipment in the immunohematology department and provides safe and convenient storage of whole blood, blood components (e.g., blood cells, plasma), and reagents. It ensures freshness and integrity of blood and blood components. MBC-4V108 can store a total of 66 pcs of 450ml blood bags.



MBC-4V108 pull down test



FEATURERS



Fast pull down

Real forced air cooling system



Temp. simulation box

Accurately detect the temperature of blood



Suction circulation system

Big fans for better temp uniformity



Universal castor wheels

Proven heavy-duty lockable castors



Lockable doors

3 Standard locks with keys for 3 doors



High-quality SUS 304

Antibacterial and corrosion resistant



Precise temp. control

Temp. fluctuation is controlled at $4 \pm 0.5^\circ\text{C}$



5 types of alarm

Audible and visual alarms



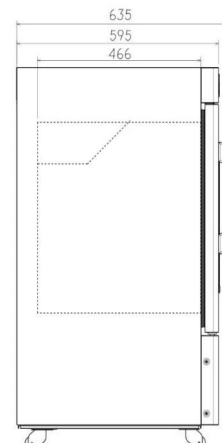
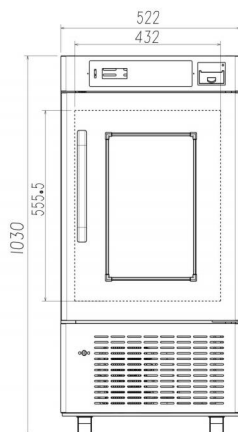
Variable space

Adjustable shelves and baskets

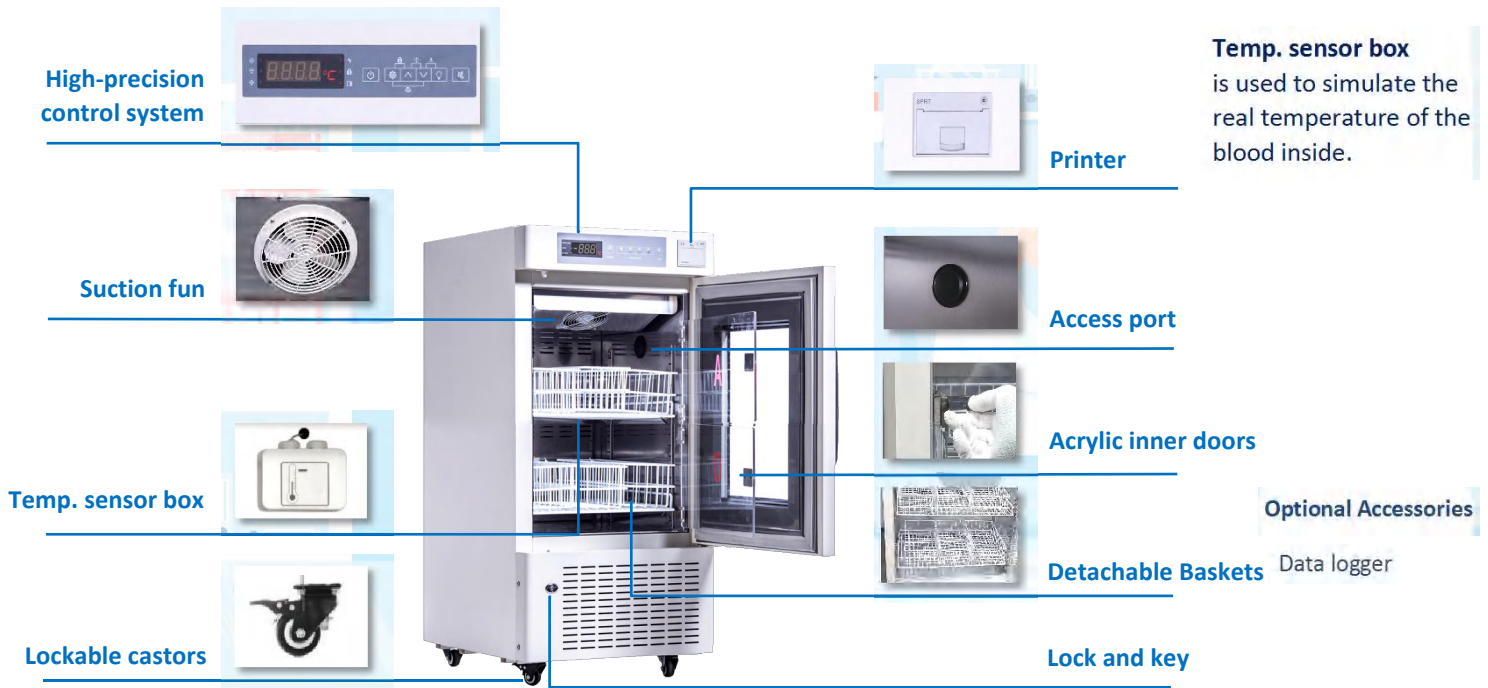


Eco-friendly

CFC-free refrigerant and energy-saving



STRUCTURE

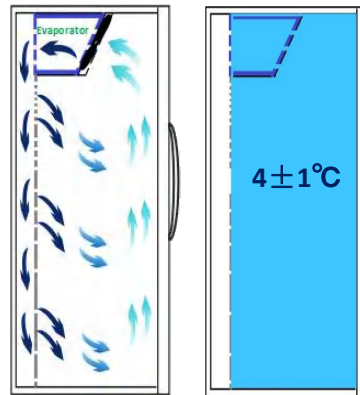


Temp. sensor box is used to simulate the real temperature of the blood inside.

Optional Accessories
Data logger



- Heating foamed glass door
- Thermal printer
- High/low temp. alarm
- Door ajar alarm
- Power failure alarm
- Controller malfunction



Real forced air circulation and excellent refrigeration system pull down the chamber temperature rapidly. Precise cooling technology keeps the temperature inside the chamber constant at $4 \pm 1^\circ\text{C}$

PARAMETER

Performance		Refrigeration System		Alarms	
Cooling method	Forced Air Cooling	Refrigerant	R134a	High/low temperature	Y
Defrost	Auto	Temp. controller	Microprocessor	Power failure	Y
Shelf/drawer	6/1	Sensor	NTC	Thermostat failure	Y
Temperature range	$4 \pm 1^\circ\text{C}$	Display	Digital display	Controller malfunction	Y
Ambient temperature	$10 \sim 32^\circ\text{C}$	External material	SPCC sprayed steel	Door ajar	Y
NT./GT. (kg)	74/95	Capacity (L/cu.ft)	108/3.81		
Electrical Data		Dimensions		Other	
Voltage frequency(V/Hz)	220V 50Hz/60Hz	Package size(W*D*H)(mm)	700*585*1200	Inside door	6 basket
Power (W)	175W	Exterior size(W*D*H)(mm)	540*630*1030	Remote alarm port	Optional
Current (A)	1.0	Interior size(W*D*H)(mm)	432*462*478	Access port QTY/Dia.	1/25mm
Power consumption	1.95kWh/24h	CBM	0.5	Internal material	SUS 304
Compressor QTY	1 EMBRACO	NT./GT. (kg)	74/95	Noise (db)	49.6