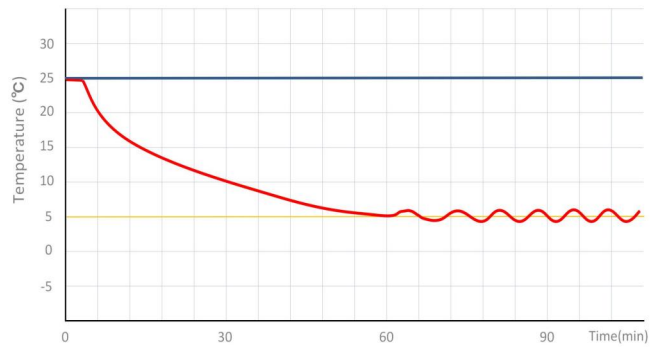


MPC-5V1006

2~8°C Pharmacy Refrigerator



MPC-5V1006 2~8°C Pharmacy Refrigerator (1006 liters) is widely used in hospitals pharmacy stores and laboratories. This is for placing and preserving storage such as drugs, vaccines, enzymes, hormones, stem cells, extracted RNA and gene libraries and important biological and chemical reagents.



MPC-5V1006 PULL DOWN TEST

FEATURES



Fast pull down

Real air-forced cooling system



Super large space

1006-liter (35.5 cu.ft) space, more storage



Suction circulation system

Big fans for better temp uniformity



Universal castor wheels

Castors with brake & leveling feet



Lockable doors

2 Standard locks with keys for 3 doors



High quality steel material

Antibacterial and corrosion resistant



Precise temp. control

Temp. control accurate to 0.1°C



5 types of alarm

Audible and visual alarms



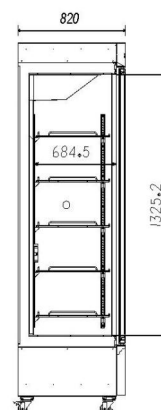
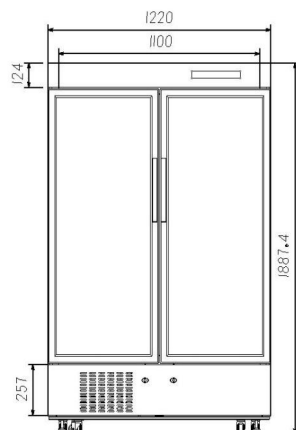
Variable space

Height adjustable shelves



Eco-friendly

CFC-free refrigerant and energy-saving



STRUCTURE

Temp. Sensor box
is used to simulate the real temperature inside the storage. So that the temperature measured by the probe is closer to the actual temperature of the contents in the cabinet.



High-precision control system



2 Large suction fan:

Self closing doors heating glass Fast defogging

Internal LED tube



Sensor box

Optional Accessories

Data logger
USB interface



**Lockable castors
Leveling feet**

Lock&keys



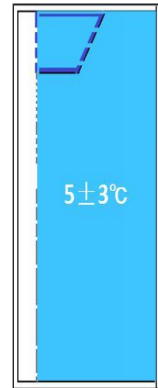
Heated glass doors

High/low temp. alarm

Power failure alarm

Thermostat failure alarm

Door ajar alarm



Real forced air circulation and excellent refrigeration system pull down the chamber temperature rapidly and keep the chamber with good temperature uniformity and fluctuation.

PARAMETER

Performance		Refrigeration System		Alarms	
Cooling method	Forced Air Cooling	Refrigerant	R290	High/low temperature	Y
Defrost	Auto	Temp. controller	Microprocessor	Power failure	Y
Shelf/drawer	Shelves/10	Sensor	NTC	Sensor error	Y
Temperature range	2°C~8°C	Display	Digital display	Controller failure	Y
Ambient temperature	10~32°C	External material	Sprayed steel	Door ajar	Y
Noise (db)	53	Compressor QTY	1	Power failure backup	8 hours

Electrical Data		Dimensions		Other	
Voltage frequency(V/Hz)	220V 50Hz/60Hz	Package size(W*D*H)(mm)	1335*945*2000	Inside door	10 shelves
Power (W)	425W	Capacity (L/cu.ft)	1006/35.5	Remote alarm port	Optional
Current (A)	2.4A	Exterior size(W*D*H)(mm)	1240*820*1900	Access port QTY/Dia.	1/25mm
Power consumption	6.23kWh/24h	Interior size(W*D*H)(mm)	1100*684*1325	Internal material	SUS 304