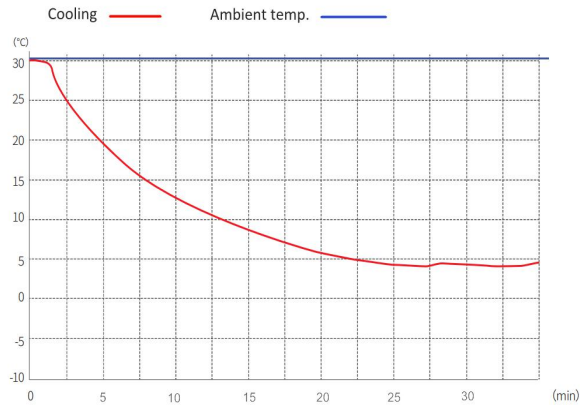


# MPC-5V226

## 2~8°C Pharmacy Refrigerator



**MPC-5V226** 2~8°C Pharmacy Refrigerator (226 liter) is widely used in hospitals pharmacy stores and laboratories. This is for placing and preserving storage such as drugs, vaccines, enzymes, hormones, stem cells, extracted RNA and gene libraries and important biological and chemical reagents.



MPC-5V226 Pull Down Curve

## FEATURERS



### Fast pull down

Real forced air cooling system



### Temperature simulation

Accurately detect the temperature of



### Suction circulation system

Big fans with less temp. fluctuation & better



### Universal castor wheels

Proven heavy-duty lockable castors



### Lockable doors

3 Standard locks with keys for 3 doors



### High-quality steel materials

Antibacterial and corrosion resistant



### Precise temp. control

Temp. control accurate to 0.1°C



### 5 types of alarm

Audible and visual alarms



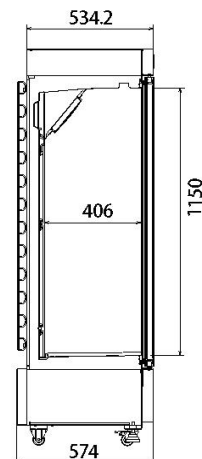
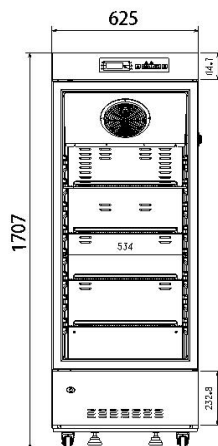
### Variable space

Height adjustable shelves



### Eco-friendly

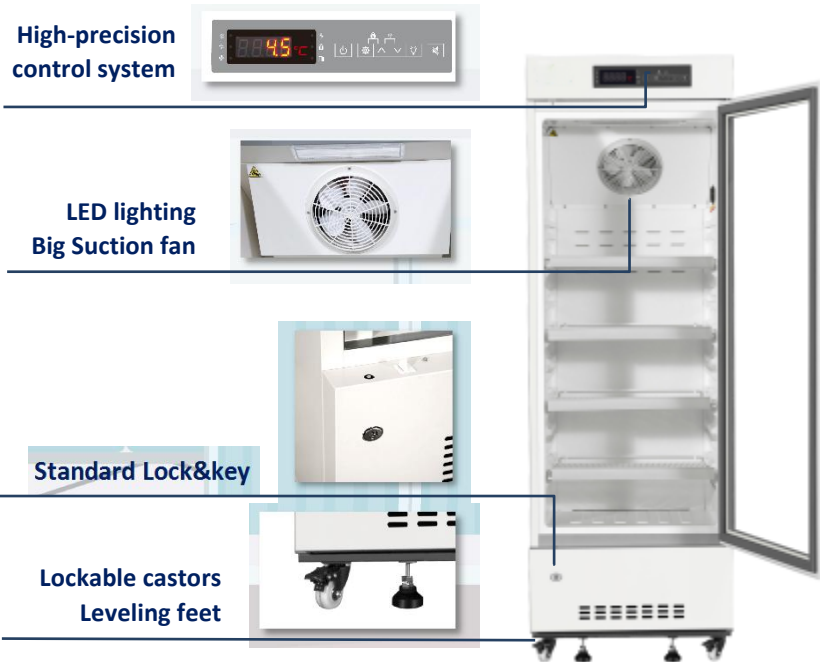
CFC-free refrigerant and energy-saving



# STRUCTURE

## Optional Accessories

USB interface  
Data logger



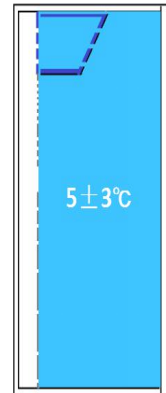
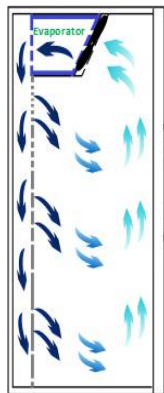
Low-E double-layer glass

High/low temp. alarm

Power failure alarm

Door ajar alarm

Thermostat failure alarm



Real forced air circulation and excellent refrigeration system pull down the chamber temperature from 25°C to 5°C in 26 minutes (at ambient temp. 25°C). And keep the chamber with good temperature uniformity and fluctuation.

# PARAMETER

Performance		Refrigeration System		Alarms	
Cooling method	Forced Air Cooling	Refrigerant	R600a	High/low temperature	Y
Defrost	Auto	Temp. controller	Microprocessor	Power failure	Y
Shelf/drawer	Shelves/4	Sensor	NTC	Sensor error	Y
Temperature range	2°C~8°C	Display	Digital display	Controller failure	Y
Ambient temperature	10~32°C	External material	SPCC sprayed steel	Door ajar	Y
Noise (db)	55	Compressor QTY	1	Power failure backup	8 hours
Electrical Data		Dimensions		Other	
Voltage frequency (V/Hz)	220V 50Hz/60Hz	Package size(W*D*H)(mm)	707*676*1745	Inside door	4 shelves
Power (W)	140W	Capacity (L/cu.ft)	226	Remote alarm port	Optional
Current (A)	1A	Exterior size(W*D*H)(mm)	625*594*1707	Access port QTY/Dia.	1/25mm
Power consumption	1.6kWh/24h	Interior size(W*D*H)(mm)	534*406*1150	Internal material	HIPS