

DW-MX Series

Intelligent Automatic Moisture Meter

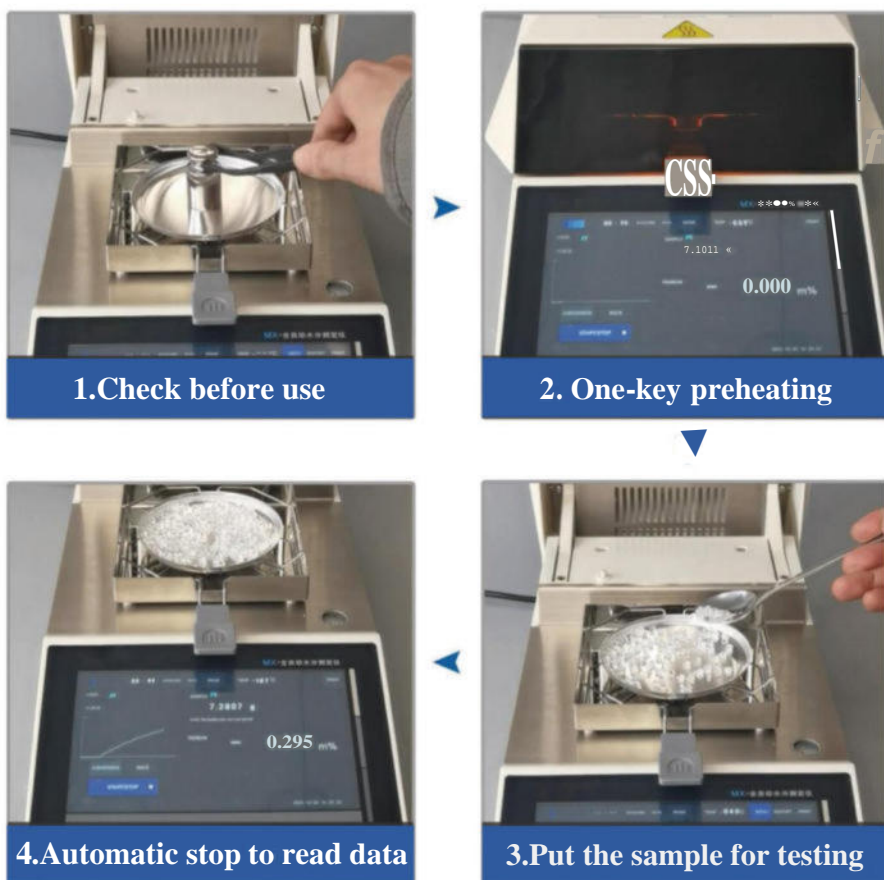
Features

1. Sample name/Company/Contact information,ect can be entered
2. Administrator/Operator Password access login
3. Date&Time/Store 200 historical sets
4. Build-in sample testing solutions
5. Available printed labels
6. WIFI/APP data association(Optional)
7. Available in English and Chinese
8. GLP/GMP format record
9. Without sample warm up/Temperature calibration
10. Automatic calibration period setting (Internal calibration)
11. Dual motor drive automatic door
12. Super silent fan



WIFI/APP data association(Optional)

Operation



USB serial port (optional)

USB serial port (standard)

Specifications

DW-MX Series				
Product specifications	DW-MX-T7		DW-MX-T7	
Model	DW-1003MX-T7	DW-1003MX-T7+	DW-1004MX-T7 Pro	DW-1004MX-T7 Pro+
Product name	T7	T7+	T7 Pro	T7 Pro+
Capacity	110g	110g	110g	110g
Resolution(g)	0.001		0.001	
Sensor	HBM		Electromagnetic force	
Display	7 Inch touch panel			
Open mode	Manual	Automatic	Automatic	Automatic
Calibration	External calibration	External calibration	External calibration	Internal calibration
Min weighing(g)	0.004g		0.0004g	
Test temperature	Optional 230°C 1°C Step			
Stable Time	≤3s			
Pan size	Φ96mm			
Operation temp	5-35°C			
Test mode	Standard/Fast/Soft/Ladder			
Shutdown mode	Auto/Manual/Timed/Custom			
Heating mode	Halogen lamp			
Interface	RS232、 USB (Optional)			
Store data	200 sets of addresses, 200 sets of test reports			
Packing Size	490x350x360mm			