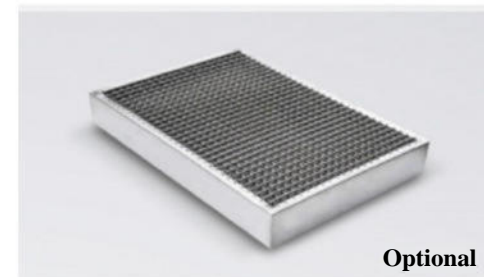
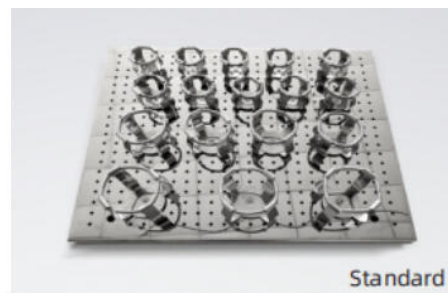


Thermostatic Shaking Incubator

Structural Features

- 1. Imported brand compressor (DW-SI-200B).
- 2. Integrated with incubator and shaker to save space and cost.
- 3. High quality ABS steel shell, polished stainless steel chamber.
- 4. Large LCD screen to display temperature and shaking speed.
- 5. With operation data memory function to eliminate faulty operation.
- 6. Non-volatile memory save settings during a power outage.
- 7. Auto-stop operation when door is opened. Strong air spring rod with easy opening and closing.
- 8. Equipped with leakage protection.
- 9. Auto-recovery after power interruption as originally programmed.
- 10. Brushless DC motor, more stable and reliable.



DW-SI-100B/103B



DW-SI-200BS



DW-SI-200BP

Specifications

Model	DW-SI-103B	DW-SI-100B	DW-SI-200BS (Steel)	DW-SI-200BP (Plastic)
Shaking Speed	20-300rpm			
Speed Precision	±1 rpm			
Swing Amplitude	φ26mm			
Standard Configuration	100mlx9	50mlx4, 100mlx4, 250mlx3, 500mlx3	50mlx5, 100mlx5, 250mlx4, 500mlx3	
Max. Volume	50mlx12, 100mlx9	50mlx20, 100mlx16, 250mlx12, 500mlx9	100mlx20, 250mlx16, 500mlx12, 1000mlx5, 2000mlx4	
Tray Size(mm)	295x253	400x370	450x410	
Tray Included	1 piece			
Timing Range	1~9999min			
Display	LCD			
Temperature Range	RT+5~60°C(RT:25°C)	RT+5~60°C	10~60°C(Cooling)	RT-15°C~60°C (Ambient temp-15°C)
Temperature Precision	±0.1°C(constant temperature)			
Temperature Precision	±1°C			
Outer Size(cm)	44x41x39	60x58x51	88x68x70	78*75*57
N.W/G.W (kg)	31/41	72/88	100/125	100/125
Chamber Volume	18L	48L	69L	69L
Power Consumption	220W	320W	580W	580W
Power Supply	AC220V-240V 50-60HZ			