

LDS Medicine Stability Testing Chamber

User Manual



Please read operating manual before installation and operation.

Drawell International Technology Limited
Chongqing Drawell Instrument Co., Ltd.
Shanghai Drawell Scientific Instrument Co.,Ltd.

Chongqing Center : Suite 2705, Building No.12, Shiyou Road No.1, Yuzhong District,
Chongqing, China.

Shanghai Office : Suite 1117, Lane561 XiuChuan Rd., PuDong New
Area, Shanghai, China

Homepage : www.drawell.com.cn

Tel : 0086-023-63268643





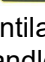

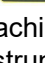

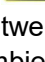

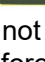
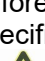
Email : sales05@drawell.com.cn

Contents

I:Precautions.....	1
II:Application.....	2
III:Technical Specifications.....	2
IV: Operation Instruction	3
V:Wiring diagram	6
VI:Printer Instruction.....	6
VII:USB Instruction.....	8
VIII:Transportation and storage.....	14
IX:After-sales service.....	14
X:Malfunction handling.....	14
XI: Packing List.....	15

Thanks for purchasing the equipment, please carefully read the manual before operating.

I:Precautions

- 1)  After the equipment is in place, lock the front casters to make the chamber stable.
- 2)  To protect the compressor, pls turn on the instrument after 48 hours when placed.
- 3)  Connect the 220V / 50Hz power supply, and the power socket should be reliably grounded.
- 4)  The device should be placed in a place that is protected from sunlight, cool and ventilated. The distance between the device and the wall must be more than 10 cm. Handle with care, the angle with the ground level should not be less than 45 °.
- 5)  In order to maintain the good appearance of the equipment, pls do not wipe the machine surface with acid or alkali or corrosive substances. The inside and outside of the instrument can be regularly cleaned with dry cloth.
- 6)  In order to obtain good working performance of the equipment, the difference between the working temperature and the environment should not be too large, and the ambient temperature should preferably be $(20 \pm 5) ^\circ\text{C}$.
- 7)  Fuse is installed at the back of the control box for this equipment. If the equipment is not powered, please check whether the fuse tube is intact. please cut off the power before checking and replacing the fuse tube and replace the same type and specifications!
- 8)  Fans are installed in the operation room. Don't insert your fingers or objects into the fan cover to avoid safety accidents and damage to the fan .Please cut off the power before changing the fan.
- 9)  Stop using ,please turn off the power switch.
- 10)  Do not store flammable or explosive materials or hazardous materials in the instrument working room.
- 11)  There is an overflow pipe on the back of this device. A small amount of water will be discharged during use. Please use a leather pipe to connect to the container or the sewer.
- 12)  There is a drain pipe at the back of the device. When the device is not in use, water is drained from the inside of the chamber.

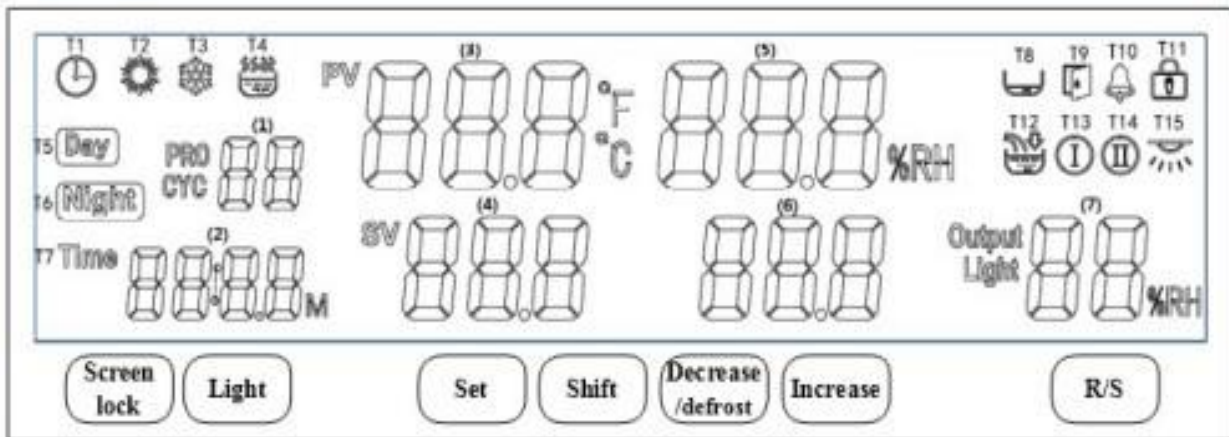
II:Application

The product has a precise temperature an, humidity and light control system, which provides various environmental simulation conditions for industrial research and biotechnology testing. It's widely used in drug and food processing, etc.

III. Technical Specifications

Model	DW-LDS-175Y-N/ LDS-175T-N	DW-LDS-175GY-N / LDS-175GT-N	DW-LDS-175HY-N
	DW-LDS-275Y-N / LDS-275T-N	DW-LDS-275GY-N / LDS-275GT-N	DW-LDS-275HY-N
	DW-LDS-375Y-N / LDS-375T-N	DW-LDS-375GY-N / LDS-375GT-N	DW-LDS-375HY-N
	DW-LDS-475Y-N / LDS-475T-N	DW-LDS-475GY-N / LDS-475GT-N	DW-LDS-475HY-N
	DW-LDS-800Y-N / LDS-800T-N	DW-LDS-800GY-N / LDS-800GT-N	DW-LDS-800HY-N
	DW-LDS-1075Y-N / LDS-1075T-N	DW-LDS-1075GY-N / LDS-1075GT-N	DW-LDS-1075HY-N
	Temperature & Humidity	Temperature & Humidity & Light	Temperature & Light
Temperature Range(°C)	0~65	Without Illumination:4~50 With Illumination:10~50	
Temperature Fluctuation	High±0.5°C、Low±2°C		
Temperature Uniformity (°C)	±2		
Humidity Range(RH)	30~95%	None	
Humidity Stability(RH)	±3%RH		
Temperature Resolution(°C)	0.1		
Illumination(LX)	None	0~6000 adjustable	
Illumination Difference((LX)		≤±500	
Timing Range	1~99 hours/period		
Temp.and Humidity adjusting	Balance temperature and humidity adjusting		Balance temperature adjusting
Cooling System	Imported compressor		
Controller	Y: Programmable (LCD display) T: Programmable (touch screen)	GY: Programmable (LCD display) GT: Programmable (touch screen)	HY:Programmable (LCD display)
Sensor	PT100 Capacitance sensor		PT100
Ambient Temperature	RT+5~30°C		

Power Supply	AC 220V±10% ,50HZ		
Power Rating(W)	1400/1950/2600/2800/3000/3200	1650/2200/2700/2900/3100/3300	1300/1750/2400/2600/2700/2800
Chamber Volume(L)	175,275,375,475,800,1075		
Chamber Size(W×D×H)mm	450×420×930 580×510×935 590×550×1160 700×550×1250 965×610×1370 950×700×1600		
Shelf	3		
Printer	Yes		
Safety Device	Compressor overheating and over pressure protection, Fan overheating protection, Over temperature protection, Overload protection,water shortage protection		



IV: Operation Instruction

Panel instructions

Display window:

- (1) : period or segment value;
- (2) : timing or time setting value;

(3) : temperature measurement value;

(4) : temperature setting value;

(5) :humidity measurement value;

(6) :humidity setting value;

(7) : heating output;

Key definition

Lock	Under normal display, long press the key for 2 seconds to manually lock or unlock the screen.
Light	Under normal display, press the key to turn on the light inside
Set	In the normal display, press the key to enter the modification interface of setting value , long press the key for 3 seconds to enter the parameter modification interface.
Shift	In the setting state, press the key to make the setting value shift and modify. If running mode, can switch the display for segments or cycle.
Increase	Press the key in the setting state to increase the setting value.
Decrease	Press the key in the setting state to decrease the setting value.
Run/Stop	In the normal display state, press this key to start or stop the operation

Temperature and humidity setting

1)Before setting the temperature and humidity, please fill the equipment with pure water until the upper limit of the water level.Turn on the power switch and press the Run/Stop key to start the operation.

2)Press the set key, the number in (4) display window flashes, can set the temperature you by pressing shift, increase and decrease key.

3)Press set key again, the number of (6) display window flashes, can set the required humidity by pressing shift, increase and decrease key.

Temperature parameter table

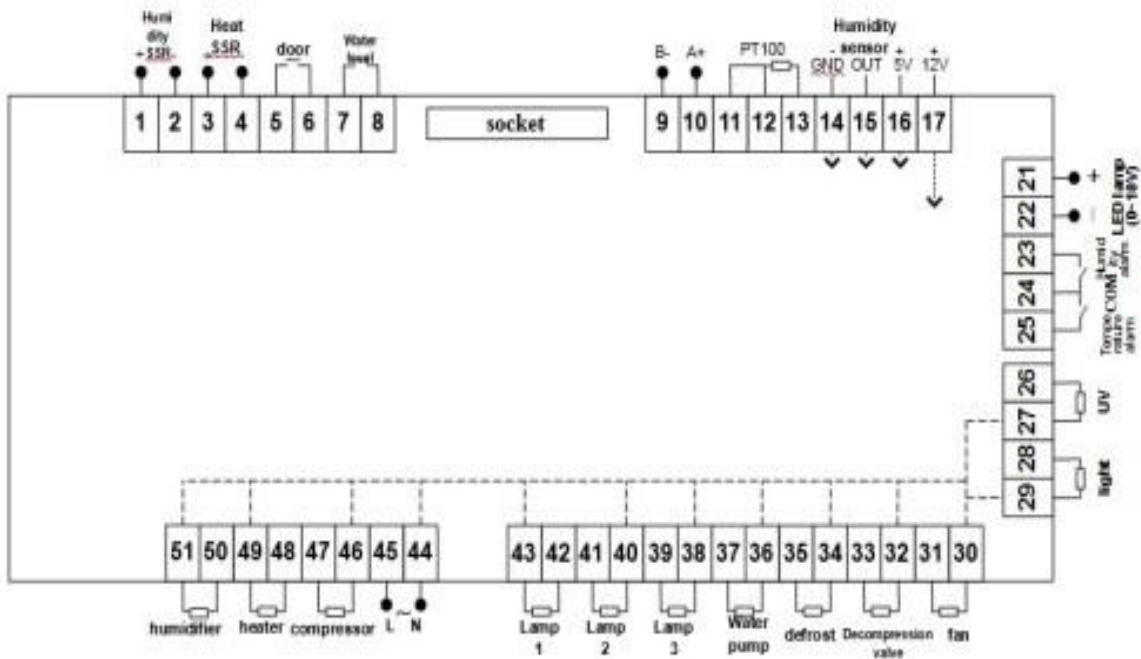
Parameter indication	Parameter name	Description for parameter function	Factory default
Lc	password	When "Lc = 103", you can view and modify the parameter value.	0
TH	Upper deviation Over temperature alarm	If "Measured value > Set value + TH", upper deviation alarm will be turned on and temperature and humidity output will be turned off. During the alarm, the temperature alarm relay has output, the buzzer beeps, the alarm indicator lights up, the temperature unit flashes quickly, click any key to cancel the beep, and the relay turns off the output.	(0~20.0℃) 5.0
TL	Lower deviation Over temperature alarm	If "measured value < set value + TL", there will be lower deviation alarm. During the alarm, the temperature alarm relay has an output, the buzzer beeps, and the temperature unit flashes slowly. Click any key to cancel the beep. Note: When "TL = 0", this function is invalid.	(-50.0~0℃) 0
Tb	Deviation correction	Correct the error caused by sensor (low temperature) measurement; Tb = actual temperature value - meter measurement value.	(-99.9~99.9℃) 0
TA	Slope correction	Correct the error caused by sensor (high temperature) measurement; TA = 1000 * (actual temperature value - instrument measurement value) ÷ instrument measurement value.	(-999~999) 0

Humidity parameter table

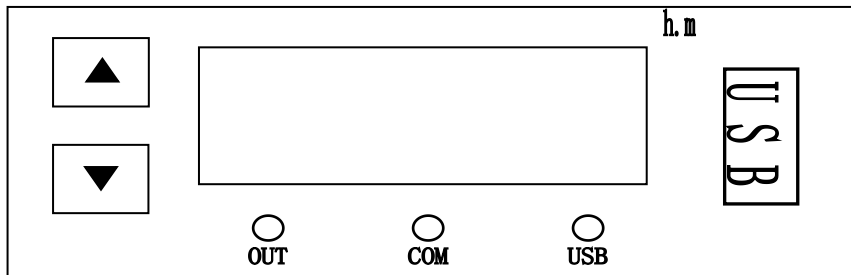
Parameter indication	Parameter name	Description for parameter function	Factory default
Lc	password	When "Lc = 103", you can view and modify the parameter value.	0





HH	Upper deviation Over humidity alarm	If "Measured value > Set value + HH", upper deviation alarm will be turned on and humidity output will be turned off. During the alarm, the humidity alarm relay has output, the buzzer beeps, the alarm indicator lights up, the humidity unit flashes quickly, click any key to cancel the beep, and the relay turns off the output.	(0~50.0%) 20.0
HL	Lower deviation Over humidity alarm	If "measured value < set value + HL", there will be lower deviation alarm. During the alarm, the humidity alarm relay has an output, the buzzer beeps, and the humidity unit flashes quickly. Click any key to cancel the beep. Note: When "HL = 0", this function is invalid.	(-50.0~0%) 0
Hb	Deviation correction	Correct the error caused by sensor (low humidity) measurement; Hb = actual humidity value - meter measurement value.	(-99.9 ~ 99.9%) 0
HA	Slope correction	Correct the error caused by sensor (high humidity) measurement; HA = 1000 * (actual humidity value - instrument measurement value) ÷ instrument measurement value.	(-999~999) 0

v:Wiring diagram



VI:Printer Instruction







1. Time display:in normal conditions,display the current time (hours and minutes)
2. OUT indicator: the light turned on, indicates that there is a printout or data is written to the U disk;
3. COM indicator: flashing light indicates the current communication is normal;
4. USB indicator: the light turned on means that the current U disk has been correctly inserted and data can be written;
5.  Increase key: Under normal state, click or long press the key to increase the printing interval time setting value.Under parameter setting state, click or long press the key to increase the parameter setting value, when the time setting value is the maximum,then press this key again will automatically flip to the minimum value;
6.  Decrease key/OK key: Under normal state, click or long press the key to decrease the setting value of printing interval time.Under parameter setting state, click this key to switch the setting parameters, long press the key to exit the setting and save the set value;
7.   : Under normal status, long press two keys at the same time, after 3 seconds,enter the parameter setting state

Operation for printer

1)After powered on, the digital tube and the indicator light are all on for 3 seconds and then enter the running state. PRT indicator lights on, time window displays the current time (hours and minutes), the printer prints "Print Test", "Current Date", "Current Data" in sequence, the OUT indicator lights up when printing out. The data is printed according to

the printing interval. When the date changes, the date is printed.

2) Under normal conditions, click  or  to set the printing interval. The setting range is from 1 to 9999 minutes; in normal status, long press the button   for 3 seconds at the same time to enter the password input state, enter the corresponding password to adjust the time and parameters.

Tips for abnormal phenomenon:

Time display shows TErr: communication error,

- 1) Check whether the instrument communication line is connected correctly;
- 2) Check whether the power of the instrument is turned on;

Time display shows UErr: U disk read and write error,

- 1) Check whether the U disk is inserted correctly;
- 2) Format the U disk or replace the U disk;
- 3) If don't need U disk storage, can enter the internal parameters to close the U disk function; (if needed, pls contact supplier)

The time display shows PErr: the printer is wrong;

- 1) Check if the printer cable is connected correctly;
- 2) Check the indicator light on the printer, if it does not light, please confirm whether the printer power cord is connected correctly;
- 3) If do not need the printing function, can enter the internal parameters to close the printing function (if needed, pls contact supplier)

Printer indicator flashes: replace printing paper

VII: USB Instruction

Step 1: Install software

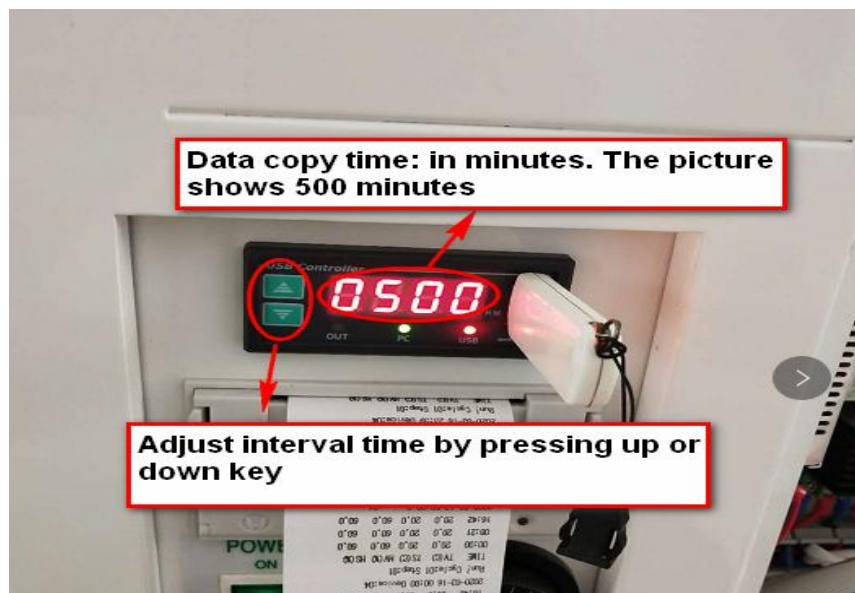


Step 2: Copy data

- (1) Find the USB interface on the lower right side of the instrument and plug in the USB disk.



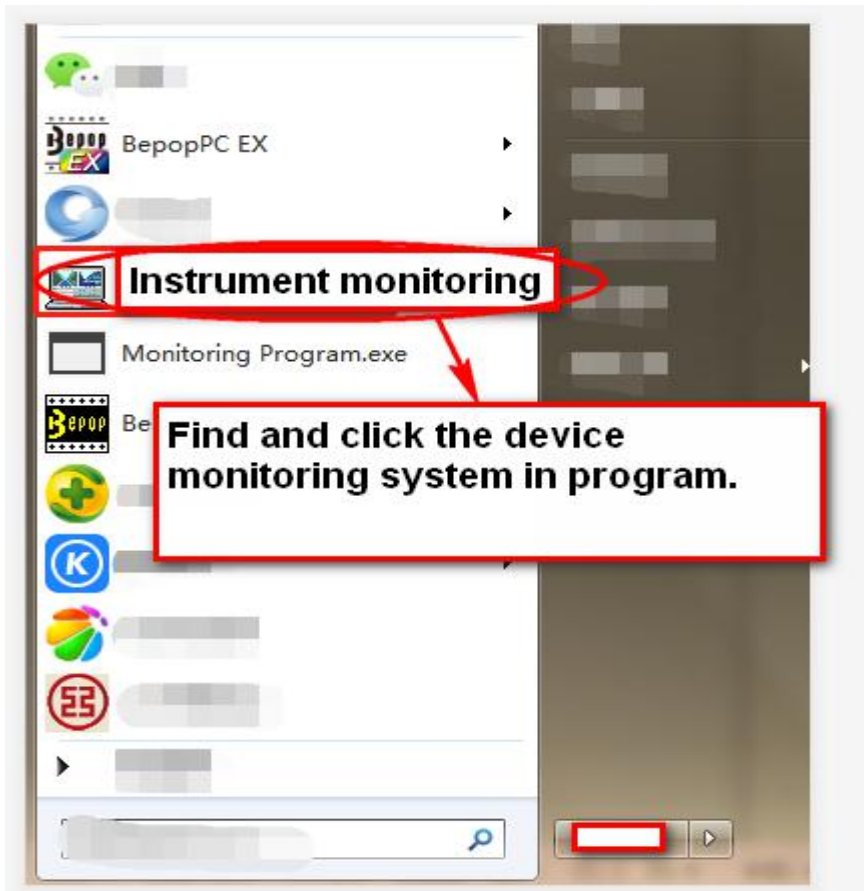
- (2) Adjust the interval time according to your experiment requirements.



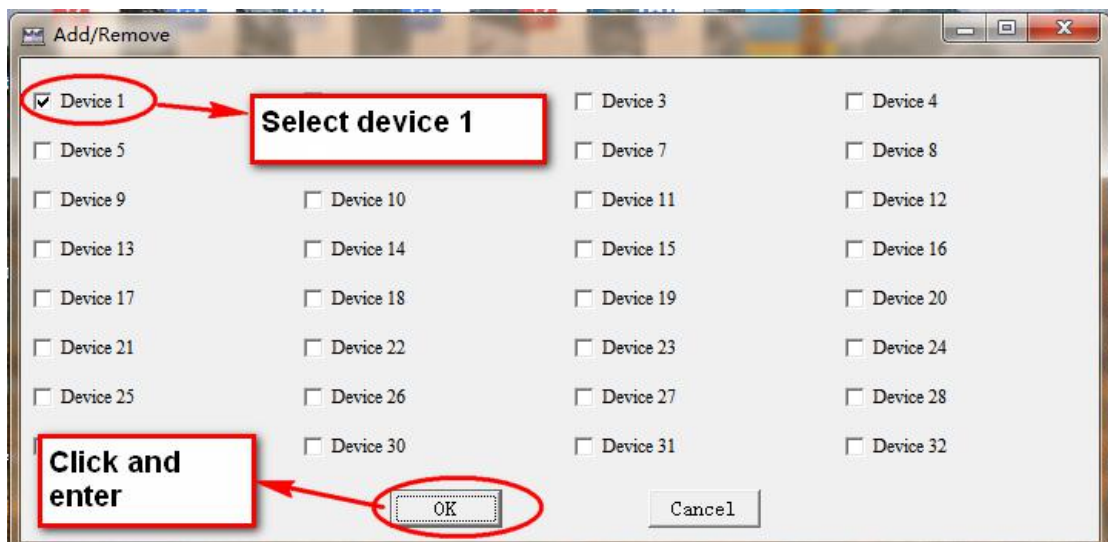
- (3) As picture shows: data exporting (printer and data export normal).



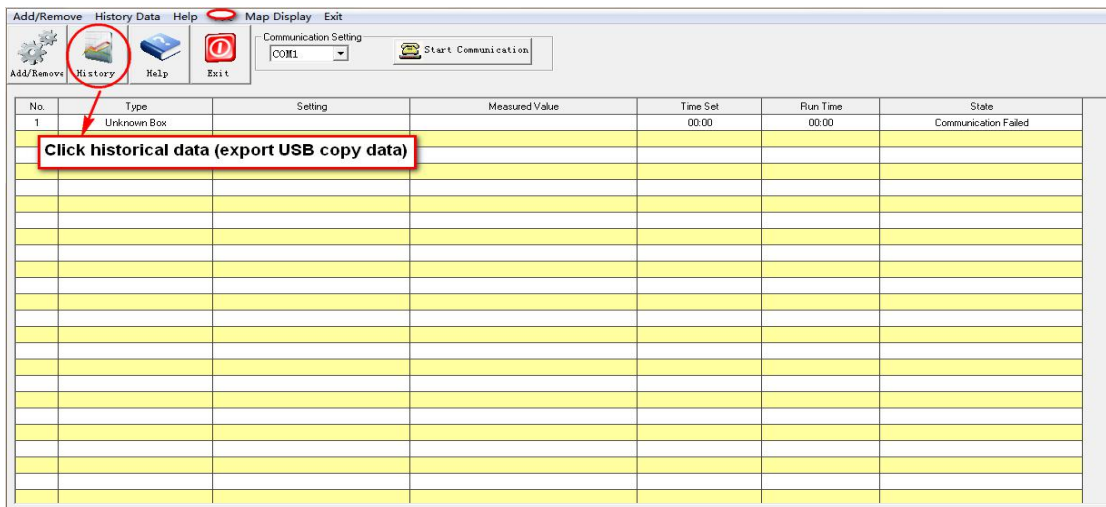
Step 3: Find and click the device monitoring system in program.



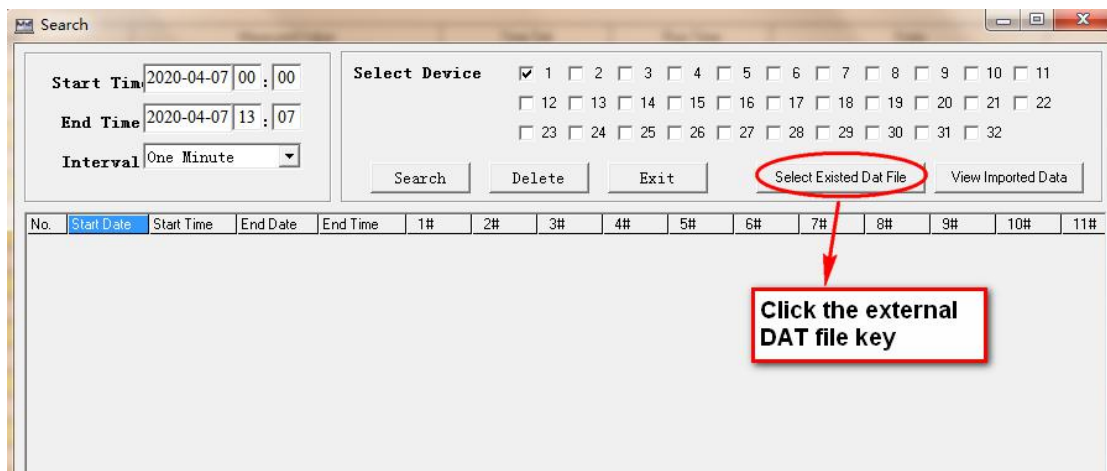
Step 4: Select device 1 and enter.



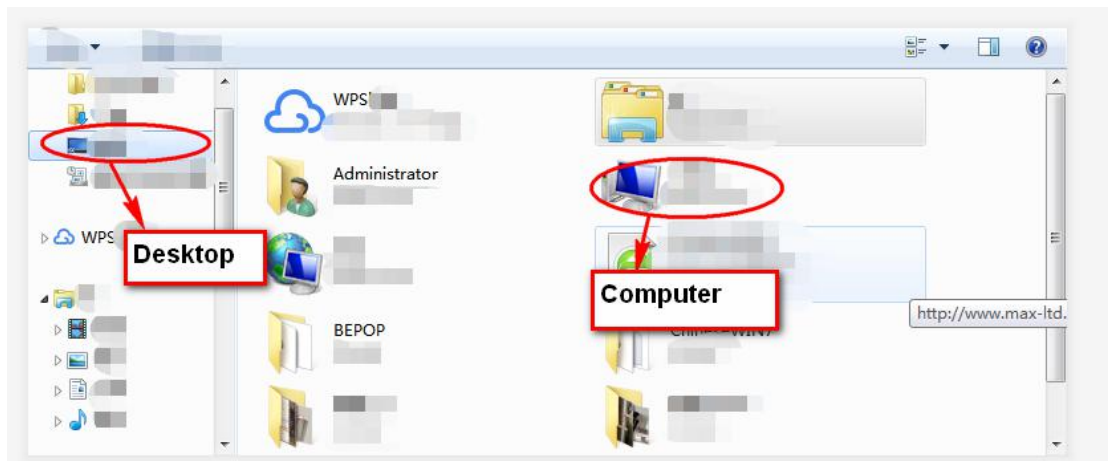
Step 5: Click to enter historical data.



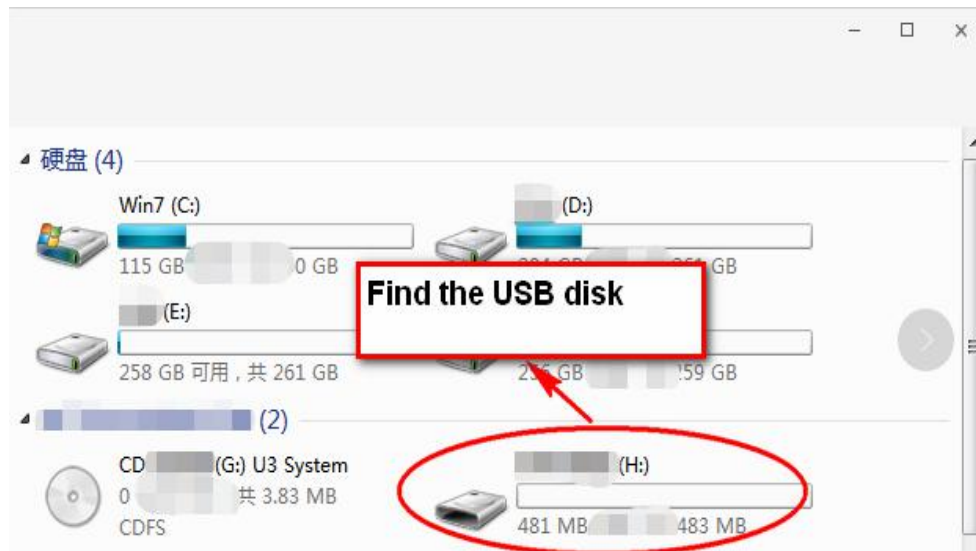
Step 6: Click the external DAT file key (Insert the USB with data from instrument to the computer before this operation).



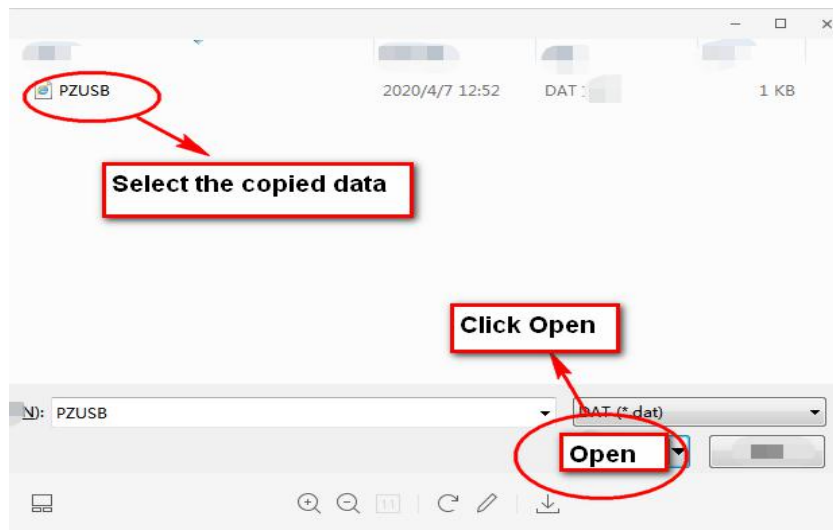
Step 7: Click on the desktop to find the computer and click to enter the computer.



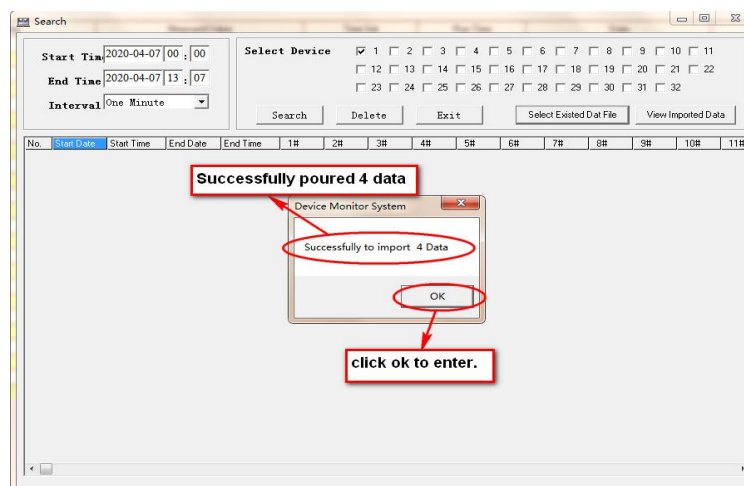
Step 8: Find the USB disk with data and enter



Step 9: Find the copied data and click open to enter.



Step 10: After entering, it will show that XXX data has been successfully imported and click ok to enter.



Step 11: Enter this step, you can see all the data you imported successfully and storage status.

The screenshot shows a 'History Data Report' window with a table of data and several control buttons. Red circles highlight the 'Start Time', 'End Time', 'Interval', 'Print', 'Draw Curve', 'Export Data', and 'Exit' buttons. Red boxes with arrows provide instructions for each button and a summary of the data.

No.	Happen Date	Happen Time	ID	Device Type	Real Temp	Set Temp	Real Humidity	Set Humidity	Real Illumination	Set Illumination
1	2020-04-07	12:49:16	1	Con Temp&Hun	50.100	50.000	4.200	60.000	0.000	0.000
2	2020-04-07	12:50:52	1	Con Temp&Hun	50.000	50.000	4.200	60.000	0.000	0.000
3	2020-04-07	12:51:52	1	Con Temp&Hun	50.000	50.000	4.200	60.000	0.000	0.000
4	2020-04-07	12:52:52	1	Con Temp&Hun	49.800	50.000	4.200	60.000	0.000	0.000

Start Time
2020-04-07
12:49:16

End Time
2020-04-07
12:52:52

Interval
One Minute

Print

Draw Curve

Export Data

Exit

The time here refers to the time when you insert the USB disk into instrument to start and end the export data

Interval time means: the time between the first and second group of copy data, the interval time can be adjusted according to your experimental requirements

Click print data to print out the data imported.

Imported data can be viewed in curves

Export data: The imported data can be saved on

Successful imported 4 groups of data

VIII: Transportation and storage

1. Care must be taken during transportation. The tilt should not exceed 45 ° and can not be transported upside down. Handle it carefully.
2. Store in a relative humidity not exceeding 80%, non-corrosive gas and well-ventilated room.

IX: After-sales service

The warranty for the instrument is 12 months from delivery (except for the heating elements). If damaged due to non-human factors or can not work normally during warranty period, our company is responsible for free repair or replacement of product parts. Beyond the warranty, we try our best to provide convenience for users.

X:Malfunction handling

Problems	Reasons	Solution
No power supply	Socket without power	Change socket
	Not plugged or wire broken	Plug well or connect wire well
	Fuse is open	Change fuse
	Power switch not on	Switch on.
The temperature inside the chamber does not rise or fall	Set temperature is incorrect	Adjust the set temperature
	Temperature controller is broken	Change the temperature controller
	Loose cable	Tighten the connection cable
Big deviation of temperature in chamber	The sensor is broken	Replace the sensor
	The fan is broken	Change the fan
	The instrument is not corrected	Refer to the Instrument operation instructions for correction
Humidity does not work inside chamber	The internal humidifier is broken.	Change humidifier
	The humidification water tank is short of water.	Dredge the water way and add water

Note: Maintenance operations shall be carried out by qualified personnel. Please turn off the power supply before repairing.

XI:Packing List

Item	Name	Category	Qty.	Remark
1	Constant Temp. And Humidity Chamber	Machine	1 Set	
2	Instruction	Document	1 Copy	
3	Fuse	Spare parts	1pc	
4	This packing list	Document	1 pc	

We reserve the right to change the data in the manual without prior notice. The company has the final interpretation right.

Drawell International Technology Limited



Chongqing Drawell Instrument CO.,Ltd

Add: Suite 2705, Building No.12, Shiyou Road No.1, Yuzhong District,
Chongqing, China

Tel: 0086-023-63268643

Shanghai Drawell Scientific Instrument Co.,Ltd

Add : Suite 1117, Lane561 XiuChuan Rd., PuDong New Area, Shanghai, China

Web : www.drawell.com.cn

Email : sales05@drawell.com.cn